



Broughton Road, W13

£390,000

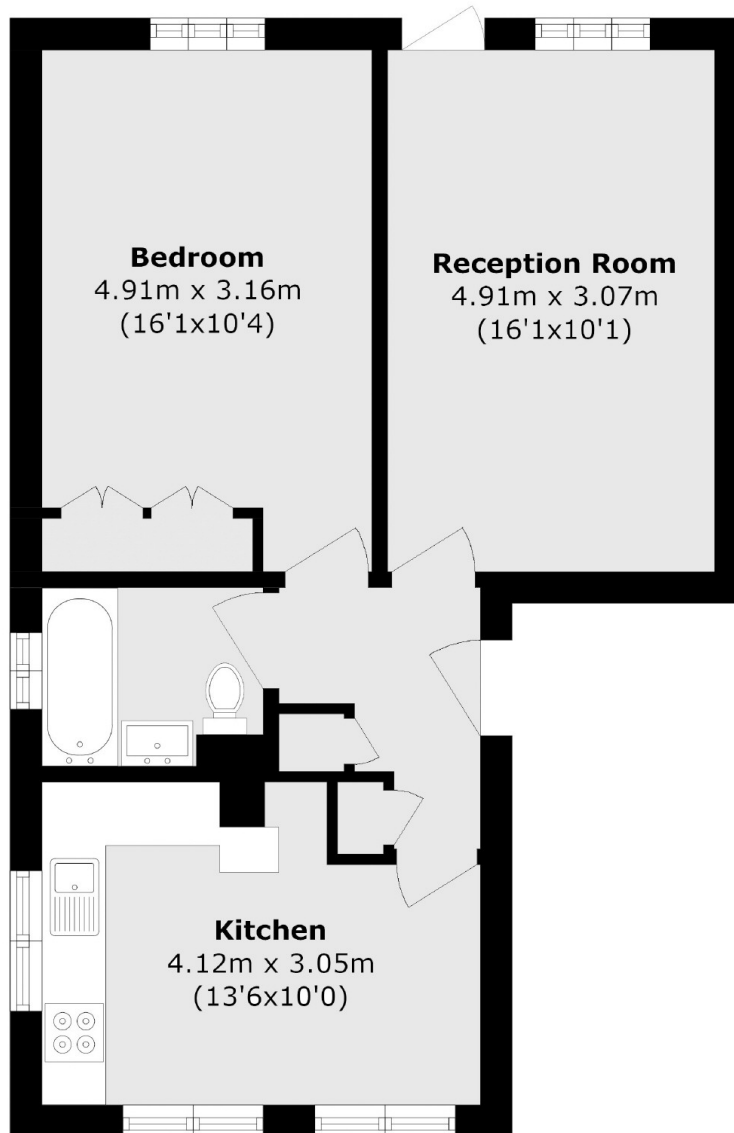
This one bedroom ground floor purpose built apartment is offered to the market with no onward chain. In fantastic condition throughout, there is a large living room and double bedroom, along with separate kitchen and modern bathroom. To the rear there is direct access to a well maintained communal garden and a storage shed.

Broughton Court is conveniently located between West Ealing and Ealing Broadway Elizabeth line stations, along with Central, District and National Rail services. There is a wide range of shops, restaurants, gyms and amenities right on the door step with the Uxbridge Road close by.

Features

- One Bedroom
- Ground Floor
- Access To Gardens
- Close To Shops and Transport
- Purpose Built
- No Onward Chain

Broughton Road,
London, W13



Total area (approx.): 51.7 sq. m (556.5 sq. ft)

Dexters

Ealing
2 New Ealing Broadway
London
W5 2NU
Sales
020 8810 0909

Energy Rating: D. We aim to make our particulars both accurate and reliable. However they are not guaranteed; nor do they form part of an offer or contract. If you require clarification on any points then please contact us, especially if you're traveling some distance to view. Please note that appliances and heating systems have not been tested and therefore no warranties can be given as to their good working order.

 **RICS** | Regulated
Estate Agent
and Letting Agent

[dexters.co.uk](https://www.dexters.co.uk)