



Grange Park, W5

£599,950

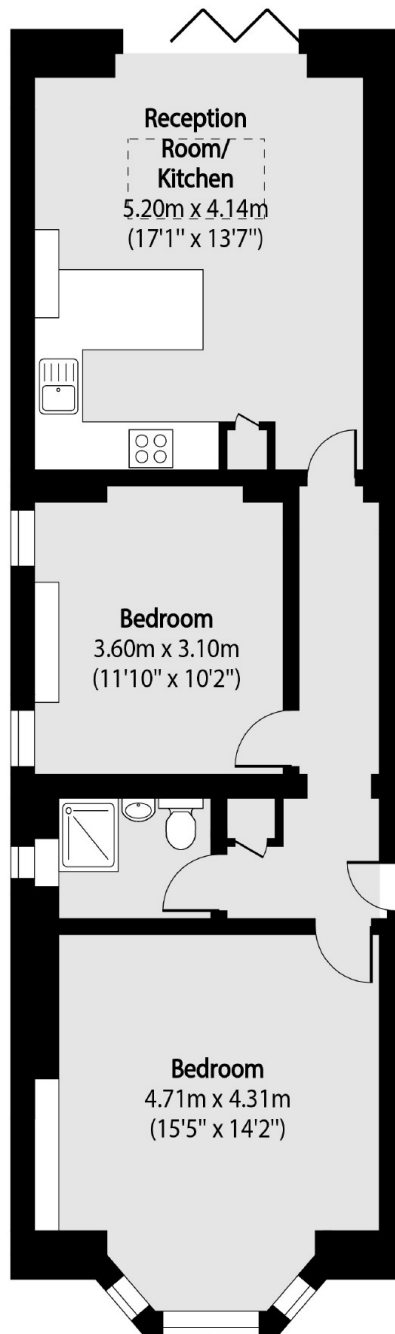
A two double bedroom ground floor period conversion with direct access to private decked area and communal garden beyond. In fantastic condition throughout, the property has high ceilings, newly renovated kitchen and bathroom, along with residents parking to the front.

Grange Park is a peaceful location just moments from the open space of Ealing Common. For the commuter, both Ealing Broadway (Elizabeth, Central and District) and Ealing Common (Piccadilly) stations are approximately half a mile away.

Features

- Two Bedrooms
- Newly Renovated
- Private Garden Section
- Residents Parking
- Close To Stations
- No Onward Chain

Grange Park, London, W5



Total area (approx): 62.12 sq m (669 sq. ft)

Dexters

Ealing
2 New Ealing Broadway
London
W5 2NU
Sales
020 8810 0909

Energy Rating: D. We aim to make our particulars both accurate and reliable. However they are not guaranteed; nor do they form part of an offer or contract. If you require clarification on any points then please contact us, especially if you're traveling some distance to view. Please note that appliances and heating systems have not been tested and therefore no warranties can be given as to their good working order.

 **RICS** | Regulated
Estate Agent
and Letting Agent

[dexters.co.uk](https://www.dexters.co.uk)