



## Hastings Road, W13

### £450,000

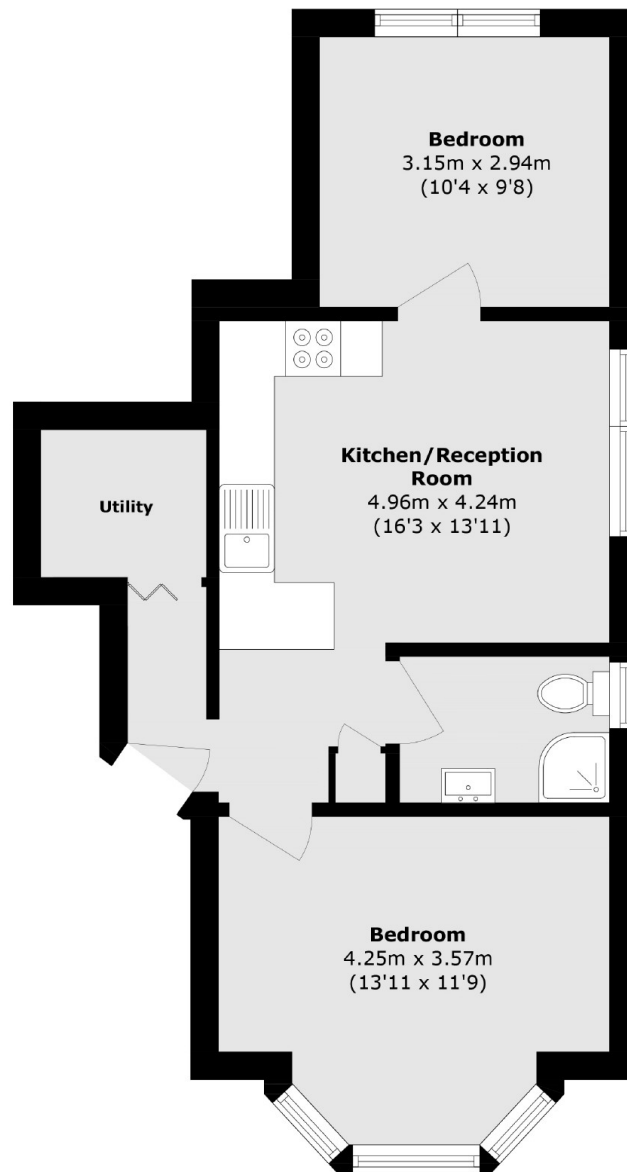
This raised ground floor two bedroom period conversion has been modernised throughout by the current owners. Immaculately presented, the property is ready to move in with two spacious bedrooms, floor to ceiling windows and lots of natural light. Share of freehold.

Ideally located between West Ealing and Ealing Broadway stations for the Elizabeth, Central and District lines. The green space of Walpole Park is a short walk, along with all the shops, restaurants and amenities that Ealing Broadway has to offer.

### Features

- Two Bedrooms
- Newly Refurbished
- Raised Ground Floor
- Period Conversion
- Share Of Freehold
- Close To Shops And Transport

Hastings Road,  
London, W13



Total area (approx.): 51.1 sq. m (550.0 sq. ft)

**Dexters**

Ealing  
2 New Ealing Broadway  
London  
W5 2NU  
Sales  
020 8810 0909

Energy Rating: . We aim to make our particulars both accurate and reliable. However they are not guaranteed; nor do they form part of an offer or contract. If you require clarification on any points then please contact us, especially if you're traveling some distance to view. Please note that appliances and heating systems have not been tested and therefore no warranties can be given as to their good working order.

 **RICS** | Regulated  
Estate Agent  
and Letting Agent

[dexters.co.uk](https://www.dexters.co.uk)