



Campbell Road, W7

£575,000

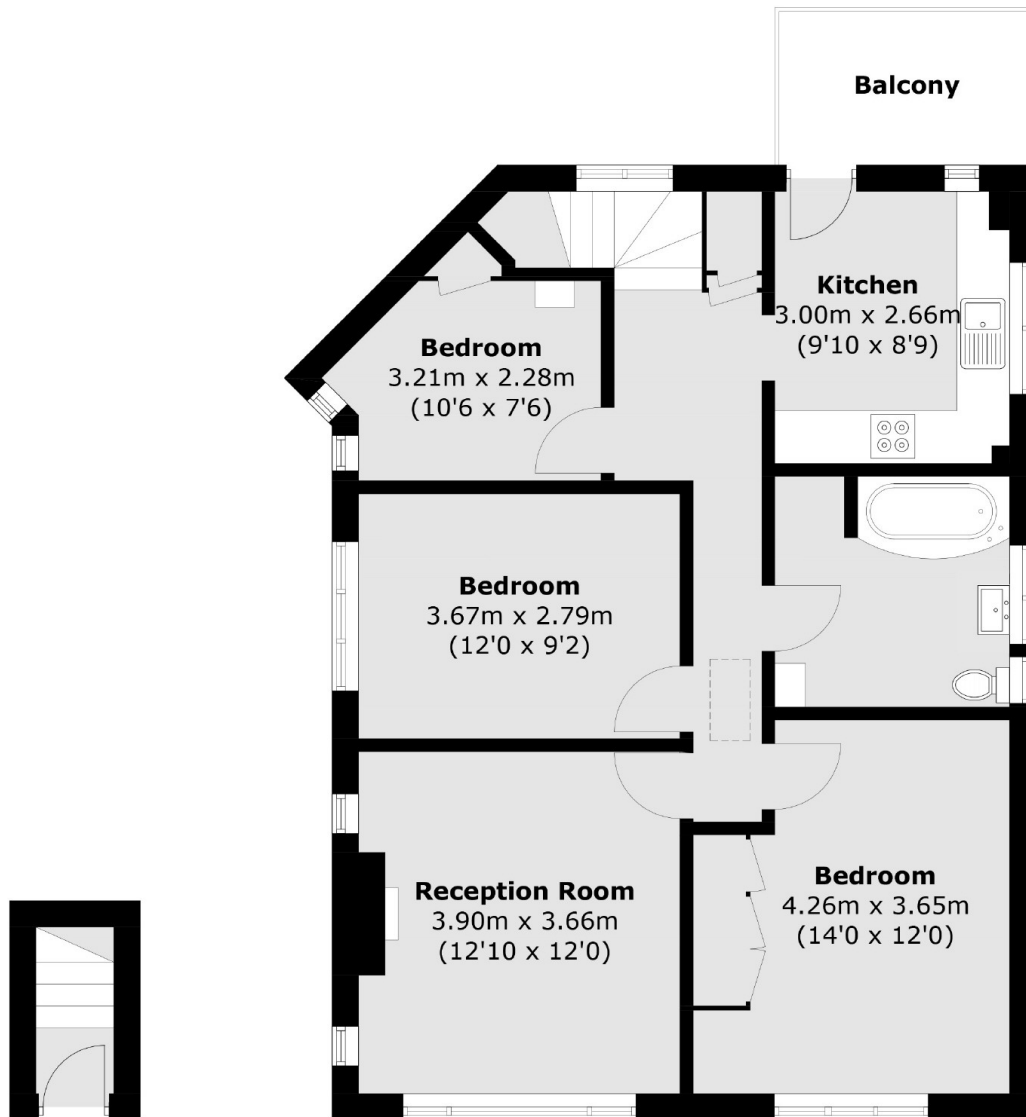
Located on the first floor of this small residential development is this three bedroom maisonette. One of eight flats in the development, the property benefits from a share of the freehold, private balcony and a private garden section. Excellent condition throughout.

Campbell Court is located approximately 60 metres from the platform of Hanwell Station. Fast connections to London and Heathrow are provided by the Elizabeth Line, along with National Rail services. A quaint and peaceful area, there are great local schools and open green spaces.

Features

- Three Bedrooms
- First Floor
- No Onward Chain
- Share Of Freehold
- Private Outside Space
- Close To Station

Campbell Road,
London, W7



Ground Floor

First Floor

Total area (approx.): 76.9 sq. m (827.7 sq. ft)
Balcony: 5.0 sq. m (53.8 sq. ft)

Dexters

Ealing
2 New Ealing Broadway
London
W5 2NU
Sales
020 8810 0909

Energy Rating: . We aim to make our particulars both accurate and reliable. However they are not guaranteed; nor do they form part of an offer or contract. If you require clarification on any points then please contact us, especially if you're traveling some distance to view. Please note that appliances and heating systems have not been tested and therefore no warranties can be given as to their good working order.

RICS | Regulated
Estate Agent
and Letting Agent

dexters.co.uk