



Park Hill, W5

£675,000

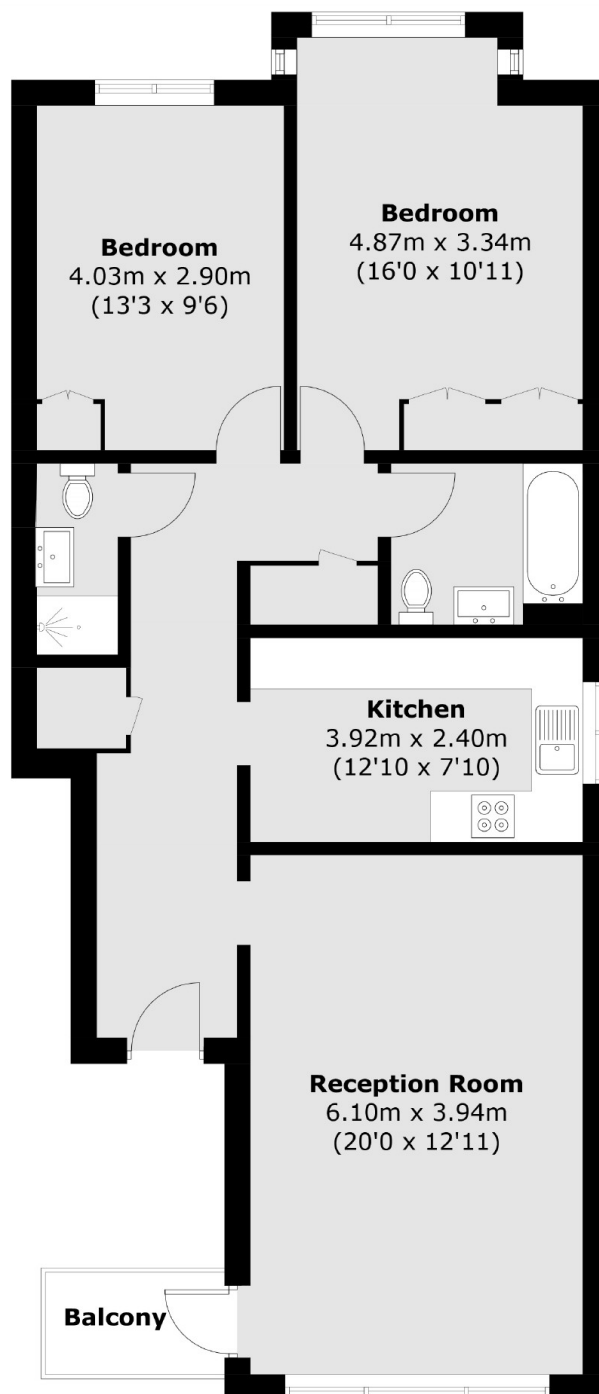
A large two-bedroom, two-bathroom apartment on the first floor of this purpose-built block, with over 900 sq. Ft of living space. The property has been fully refurbished and recently benefited from new double glazing throughout. There is a long underlying lease and a separate garage.

Located less than a mile from Ealing Broadway Tube and National Rail station, with the new Elizabeth Line, in the popular Montpelier area, and with the Ofsted-rated outstanding Montpelier Primary School.

Features

- Two Bedrooms
- First Floor
- No Onward Chain
- Long Lease
- Garage
- Premium Location

Park Hill, London, W5



Total area (approx.): 85.2 sq. m (917.1 sq. ft)
Balcony area (approx.): 2.5 sq. m (27 sq. ft)

Dexters

Ealing
2 New Ealing Broadway
London
W5 2NU
Sales
020 8810 0909

Energy Rating: C. We aim to make our particulars both accurate and reliable. However they are not guaranteed; nor do they form part of an offer or contract. If you require clarification on any points then please contact us, especially if you're traveling some distance to view. Please note that appliances and heating systems have not been tested and therefore no warranties can be given as to their good working order.

 **RICS** | Regulated
Estate Agent
and Letting Agent

[dexters.co.uk](https://www.dexters.co.uk)