



Gunnersbury Avenue, W5

£1,849,950

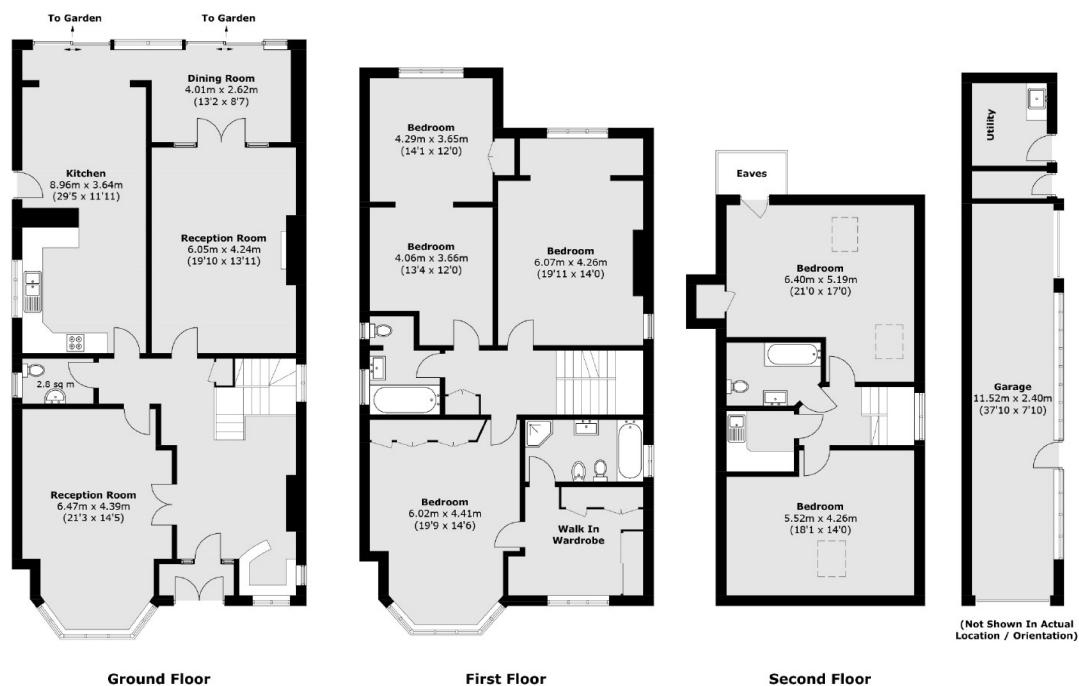
This large detached family home spans over 3,356sqft with 5/6 bedrooms, 3 bathrooms, 2 receptions, kitchen/diner, a ground floor WC, grand entrance hall, a garage and a driveway for multiple cars.

This property is located between Ealing Common and Gunnersbury Park. Transport links include Ealing Broadway station (Elizabeth Line, Central Line, District lines and Mainline Rail) and Ealing Common Station (District Line and Piccadilly). It also has easy access to the North Circular, M4 and A40. Ealing Broadway is under a mile away where there are many shops, restaurants, bars and cafes.

Features

- 5/6 Bedrooms
- Detached
- Off-Street Parking
- Large Garden
- Garage
- Close to Transport

Gunnersbury Avenue, London, W5



Total area (approx.): 311.8 sq. m (3,356.2 sq. ft)
Outbuilding: 36.1 sq. m (388.6 sq. ft) (Including Garage)
(Excluding Eaves)

Dexters

Ealing
2 New Ealing Broadway
London
W5 2NU
Sales
020 8810 0909

Energy Rating: D. We aim to make our particulars both accurate and reliable. However they are not guaranteed; nor do they form part of an offer or contract. If you require clarification on any points then please contact us, especially if you're traveling some distance to view. Please note that appliances and heating systems have not been tested and therefore no warranties can be given as to their good working order.

RICS Regulated
Estate Agent
and Letting Agent

dexters.co.uk