

## Sarsfield Road, UB6

### £599,950

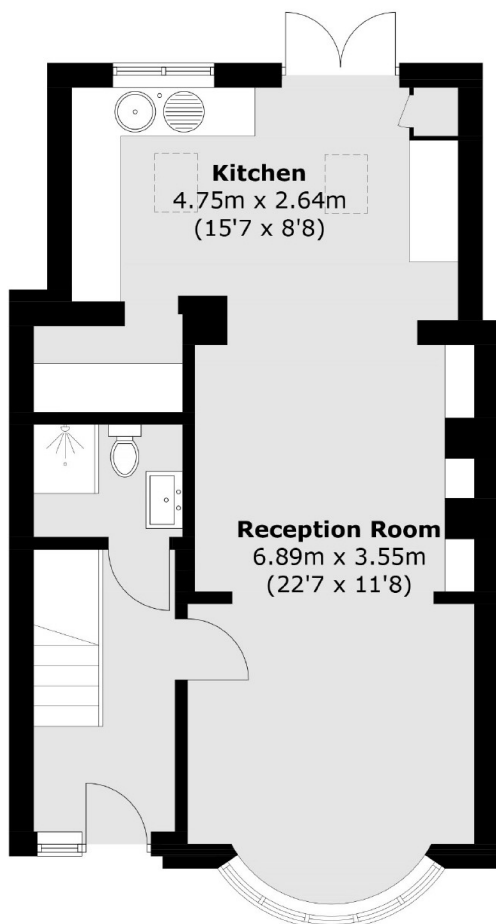
A three bedroom family home that has been extended on the ground floor to provide a wonderful, open plan, family living space. On the ground floor there is off street parking to the front and a sunny west facing garden to the rear. Excellent condition throughout and ready to move in.

Conveniently located for the Central Line at Perivale station. There is easy vehicular access to the A40 and the North circular. There are well regarded local schools, including the well regarded John Fisher Primary that is opposite.

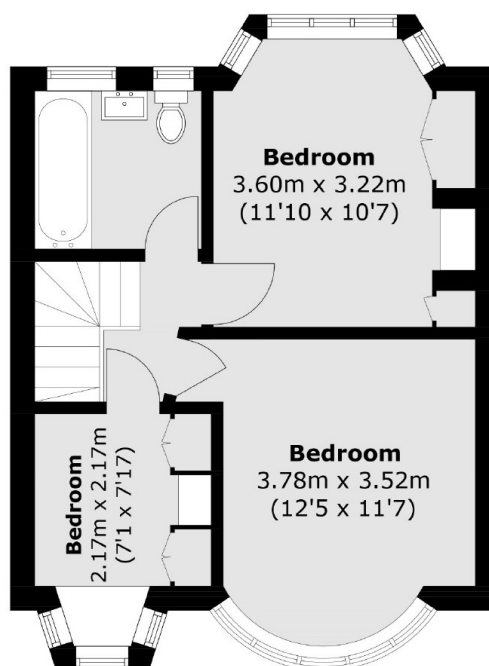
### Features

- Three Bedrooms
- Ground Floor Extended
- Open Plan Living
- Off Street Parking
- West Facing Garden
- Close To Station

Sarsfield Road,  
Greenford, UB6



**Ground Floor**



**First Floor**

Total area (approx.): 85.6 sq. m (921.4 sq. ft)

**Dexters**

Ealing  
2 New Ealing Broadway  
London  
W5 2NU  
Sales  
020 8810 0909

Energy Rating: C. We aim to make our particulars both accurate and reliable. However they are not guaranteed; nor do they form part of an offer or contract. If you require clarification on any points then please contact us, especially if you're traveling some distance to view. Please note that appliances and heating systems have not been tested and therefore no warranties can be given as to their good working order.

 **RICS** | Regulated  
Estate Agent  
and Letting Agent

[dexters.co.uk](http://dexters.co.uk)