

## Peal Gardens, W13

### £850,000

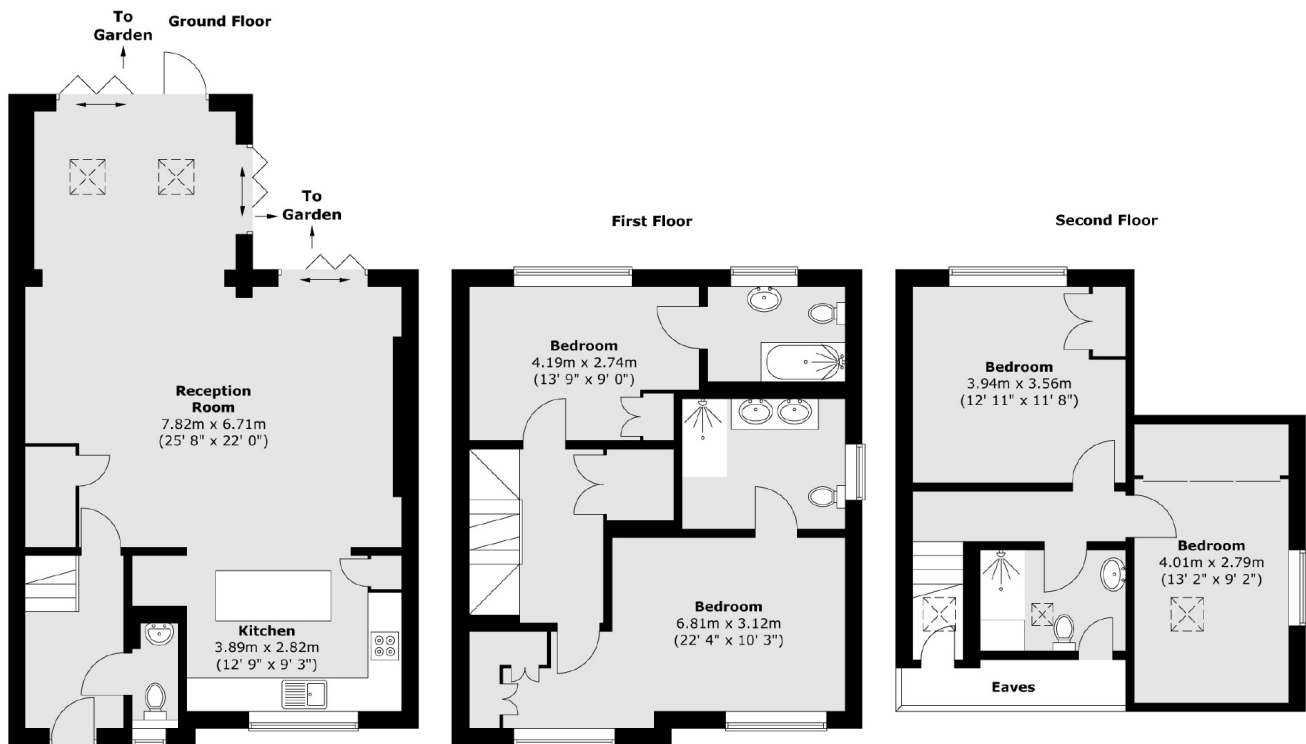
A truly unique and one of a kind four bedroom, three bathroom end terrace family home. Modernised to an incredibly high standard by the current owners with three storey side and rear extensions. Overlooking playing fields with allocated parking and an enclosed garden, this is a fantastic family home.

Located just 0.7 miles from Perivale Central Line station and approximately a mile from West Ealing Elizabeth Line. There are numerous local schools, state and private, along with the green space of Pitshanger Park and the award winning Pitshanger Lane High Street.

### Features

- Four Bedrooms
- Three Bathrooms
- Allocated Parking
- Overlooking Playing Fields
- Modernised And Extended
- No Onward Chain

# Peal Gardens, London, W13



Total area (approx.) : 160.1 sq. m (1723 sq. ft)

## Dexters

Ealing  
2 New Ealing Broadway  
London  
W5 2NU  
Sales  
020 8810 0909

Energy Rating: . We aim to make our particulars both accurate and reliable. However they are not guaranteed; nor do they form part of an offer or contract. If you require clarification on any points then please contact us, especially if you're traveling some distance to view. Please note that appliances and heating systems have not been tested and therefore no warranties can be given as to their good working order.

 **RICS** | Regulated  
Estate Agent  
and Letting Agent

[dexters.co.uk](http://dexters.co.uk)