

Gunnersbury Avenue, W5 £435,000

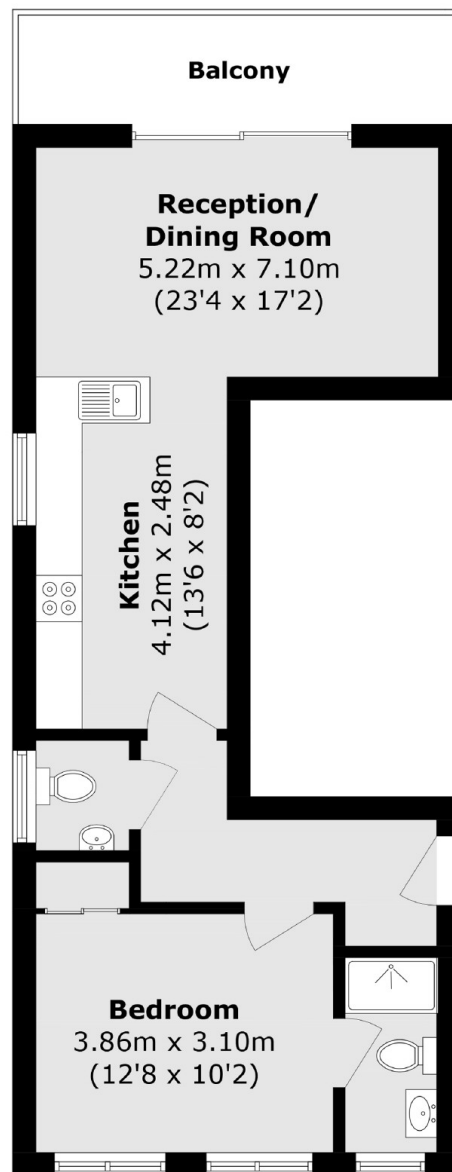
Built in 2021 and still with a new homes warranty, this first floor one bedroom apartment offers over 560 sqft of living space. It comes with a long lease, separate WC, private balcony, communal gardens and a residents gym.

This property on Gunnersbury Avenue is located 0.5 miles from Ealing Common tube station (Piccadilly & District Line) and Ealing Broadway Station which is 0.9 miles away (Elizabeth Line, Central Line, District line & Mainline Rail). Ealing Broadway host an array of shops, bars, restaurants, convenience stores and many scenic parks.

Features

- One Bedroom
- New Homes Warranty
- Private Balcony
- Residents Gym
- Communal Gardens
- Close to Transport

Gunnersbury Avenue, London, W5



Total area (approx.): 52.3 sq. m (562.9 sq. ft)

Balcony area (approx.): 8.1 sq. m (87.2 sq. ft)

Dexters

Ealing
2 New Ealing Broadway
London
W5 2NU
Sales
020 8810 0909

Energy Rating: C. We aim to make our particulars both accurate and reliable. However they are not guaranteed; nor do they form part of an offer or contract. If you require clarification on any points then please contact us, especially if you're traveling some distance to view. Please note that appliances and heating systems have not been tested and therefore no warranties can be given as to their good working order.

 **RICS** | Regulated
Estate Agent
and Letting Agent

[dexters.co.uk](https://www.dexters.co.uk)