



Marchwood Crescent, W5 £799,000

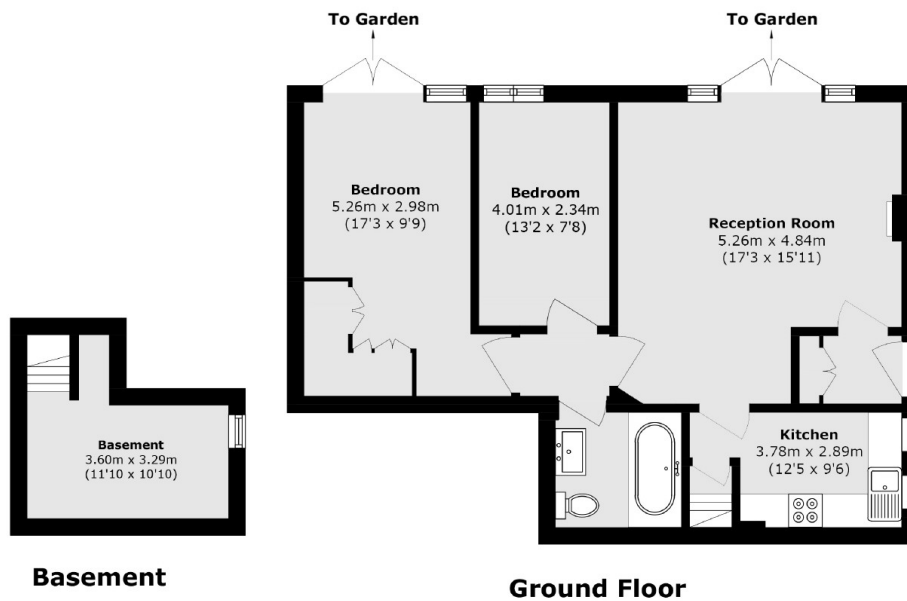
Opposite Ealing Abbey on one of Ealing's premier roads is this two bedroom garden flat in a grand Victorian building. It has 860sqft of living space, separate kitchen, its own entrance, a share of the freehold, allocated off street parking and a large private garden.

This property is located 0.5 miles from Ealing Broadway Station (Elizabeth Line, District Line, Central Line and Mainline Rail). Ealing Broadway has many shops, bars, restaurants, and convenience stores. There is also a number of excellent schools close by.

Features

- Two Bedrooms
- South Facing Garden
- Share of the Freehold
- Private Allocated Parking
- Chain Free
- Close to Transport

Marchwood Crescent, London, W5



Total area (approx.): 79.9 sq. m (860.0sq. ft)
(Including Basement)

Dexters

Ealing
2 New Ealing Broadway
London
W5 2NU
Sales
020 8810 0909

Energy Rating: . We aim to make our particulars both accurate and reliable. However they are not guaranteed; nor do they form part of an offer or contract. If you require clarification on any points then please contact us, especially if you're traveling some distance to view. Please note that appliances and heating systems have not been tested and therefore no warranties can be given as to their good working order.

 **RICS** | Regulated
Estate Agent
and Letting Agent

[dexters.co.uk](https://www.dexters.co.uk)