



Hartington Road, W13

£1,000,000

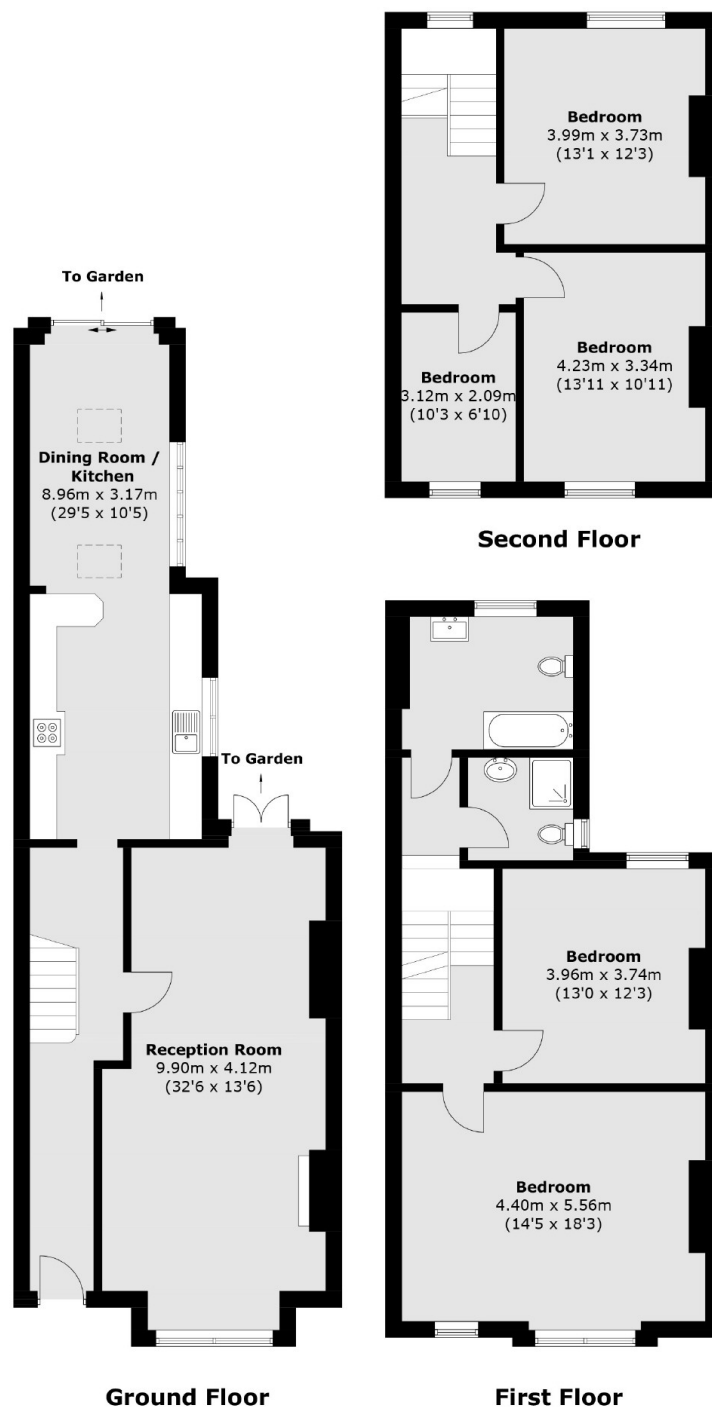
Requiring complete modernisation throughout, this five bedroom property is ripe for redevelopment back into a fantastic family home or conversion to multiple flats, subject to the relevant consents. Naturally arranged over three floors and currently just under 2000sq.ft.

Hartington Road is ideally located just moments from the West Ealing Elizabeth Line station. Ealing Broadway station and shopping centre with its wide range of amenities is less than a mile.

Features

- Full Modernisation Required
- Five Bedrooms
- Three Storey Building
- Off Street Parking
- Close To Station
- No Onward Chain

Hartington Road, London, W13



Total area (approx.): 182.7 sq. m (1,966.5 sq. ft)

Dexters

Ealing
2 New Ealing Broadway
London
W5 2NU
Sales
020 8810 0909

Energy Rating: . We aim to make our particulars both accurate and reliable. However they are not guaranteed; nor do they form part of an offer or contract. If you require clarification on any points then please contact us, especially if you're traveling some distance to view. Please note that appliances and heating systems have not been tested and therefore no warranties can be given as to their good working order.

 **RICS** | Regulated
Estate Agent
and Letting Agent

[dexters.co.uk](https://www.dexters.co.uk)