



Laurie Road, W7

£550,000

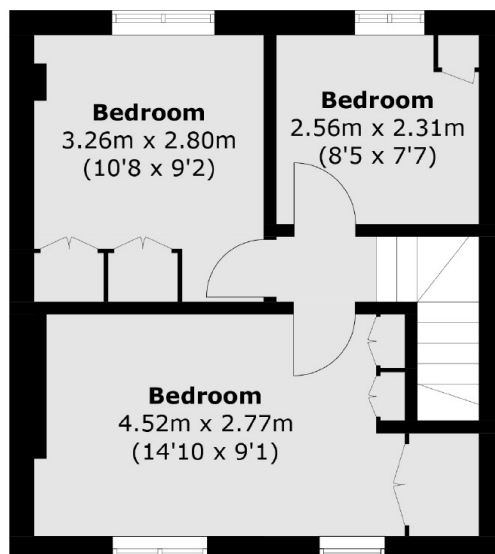
This three bedroom mid terrace home has been modernised by the existing owners and is in good order throughout. There is a large garden to the rear and off street parking to the front. A wonderful family home.

Located in the popular residential Cuckoo development with well regarded local schools close by. Hanwell station with the fast Elizabeth Line connecting Central London and beyond is under a mile away.

Features

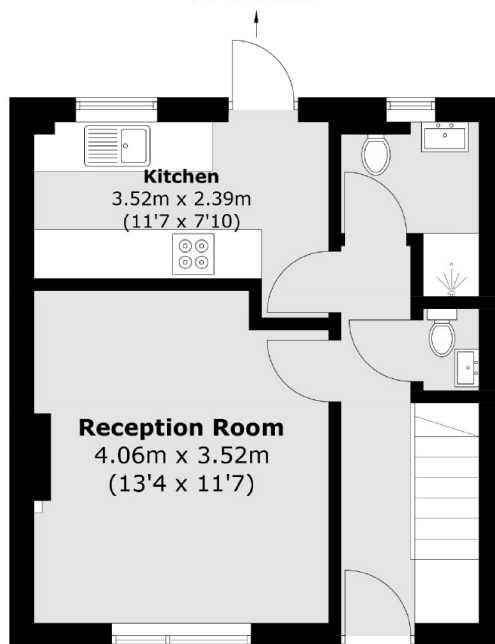
- Three Bedrooms
- Large Garden
- Extension Potential
- Good Local Schools
- Off Street Parking
- Residential Estate

Laurie Road,
London, W7



First Floor

To Garden



Ground Floor

Total area (approx.): 66.6 sq. m (716.9 sq. ft)

Dexters

Ealing
2 New Ealing Broadway
London
W5 2NU
Sales
020 8810 0909

Energy Rating: C. We aim to make our particulars both accurate and reliable. However they are not guaranteed; nor do they form part of an offer or contract. If you require clarification on any points then please contact us, especially if you're traveling some distance to view. Please note that appliances and heating systems have not been tested and therefore no warranties can be given as to their good working order.

 **RICS** | Regulated
Estate Agent
and Letting Agent

[dexters.co.uk](https://www.dexters.co.uk)