



## Queens Walk, W5

£600,000

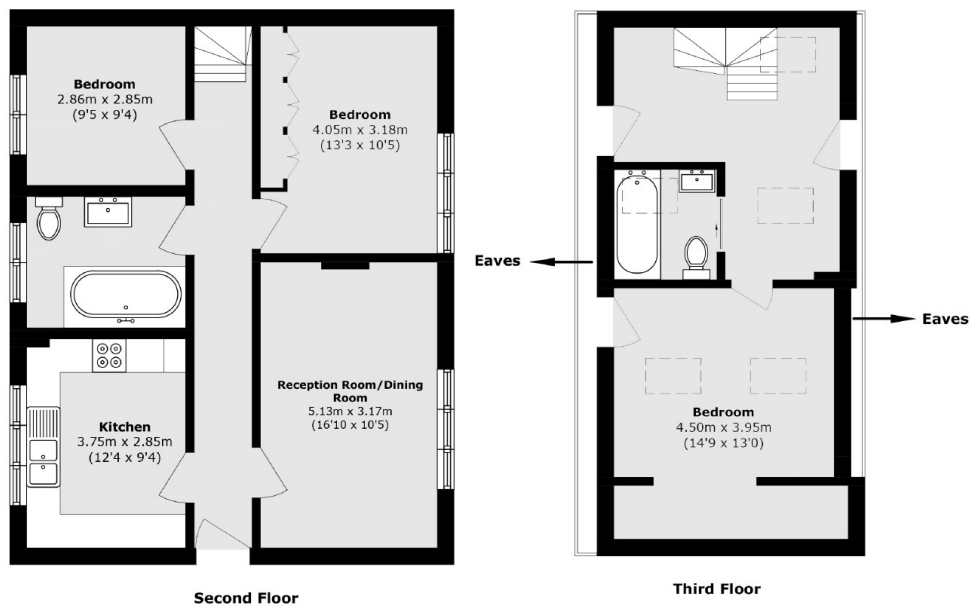
A wonderful top floor three bedroom, two bathroom, purpose built split level apartment with over 1100sq.ft of living space. In excellent decorative order throughout, the property is ready to move in and benefits from well maintained communal gardens, an allocated parking space and a share of the freehold.

Located just moments from the award winning High Street, Pitshanger Lane, with a wide range of shops and amenities. There are excellent local schools and you are under a mile from the transport hub of Ealing Broadway with the Elizabeth Line, Central and District Lines.

### Features

- Three Bedrooms
- Two Bathrooms
- Split Level
- Allocated Parking
- Communal Gardens
- Excellent Decorative Order

# Queens Walk, London, W5



Total area (approx.): 105.8 sq. m (1138.8 sq. ft)  
(Excluding Eaves)