



Woodfield Avenue, W5

£1,180,000

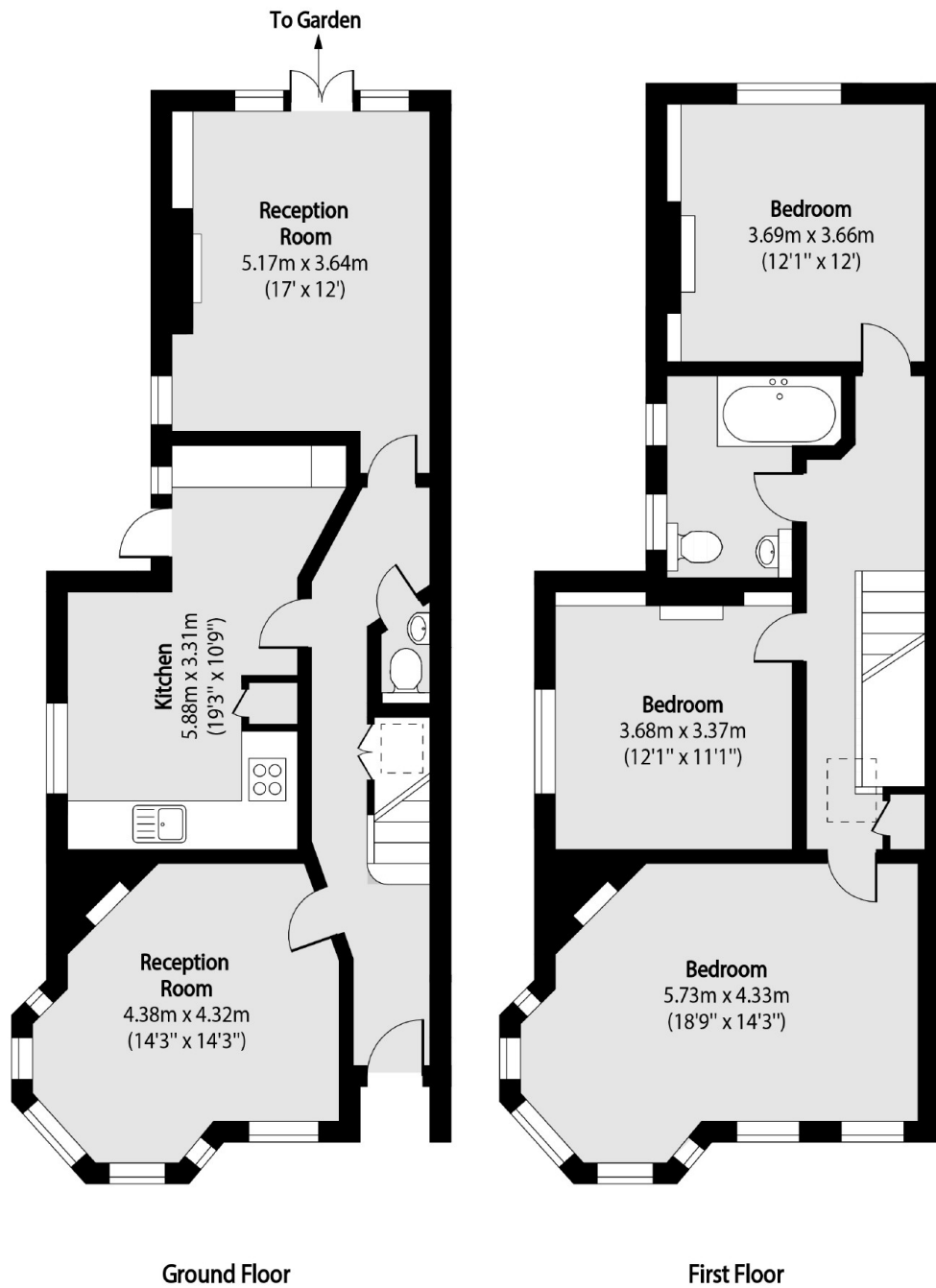
This end terrace three bedroom Edwardian home with a unique turret design has been modernised by the existing owner with a new kitchen and redecoration throughout. There are two reception rooms, separate kitchen and a West facing garden. A wonderful family home.

Located off of the popular and desirable Pitshanger Lane, an incredibly popular area for young families with excellent local schools and green parks. Ealing Broadway station is approximately a mile away. A nice walk or there are direct bus routes for the commuter.

Features

- Three Bedrooms
- West Facing Garden
- Recent Refurbishment
- Close To Schools
- Local Parks
- Pitshanger Location

Woodfield Avenue, London, W5



Total area (approx): 133.46 sq m (1437 sq. ft)

Dexters

Ealing
2 New Ealing Broadway
London
W5 2NU
Sales
020 8810 0909

Energy Rating: D. We aim to make our particulars both accurate and reliable. However they are not guaranteed; nor do they form part of an offer or contract. If you require clarification on any points then please contact us, especially if you're traveling some distance to view. Please note that appliances and heating systems have not been tested and therefore no warranties can be given as to their good working order.

 **RICS** | Regulated
Estate Agent
and Letting Agent

[dexters.co.uk](https://www.dexters.co.uk)