



Castlebar Hill, W5

£1,000,000

A unique and historic former groundskeepers cottage that has been extensively modernised by the current owners to provide a wonderful two bedroom cottage. There are two reception rooms with a courtyard garden leading to an expansive home office that is over thirty feet in length.

Approximately 0.7 miles from Ealing Broadway station with the new Elizabeth line, Central and Piccadilly services. The award winning Pitshanger Lane is close by with a village feel and range of amenities. There are numerous green spaces and excellent local schools.

Features

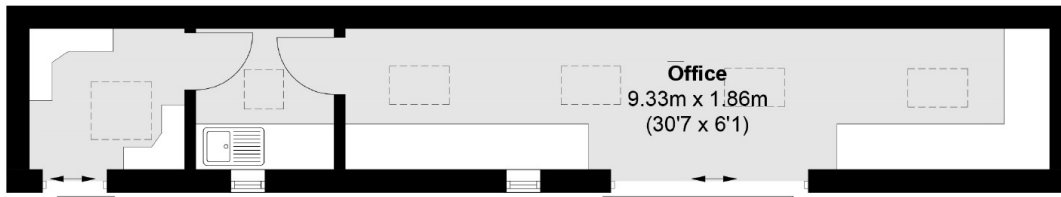
- Historic Cottage
- Extensively Modernised
- No Onward Chain
- Courtyard Garden
- Two Bedrooms
- Thirty Foot Home Office Room



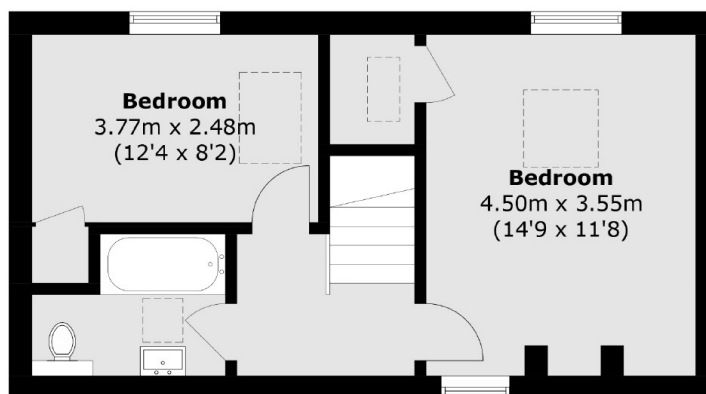
Castlebar Hill, W5



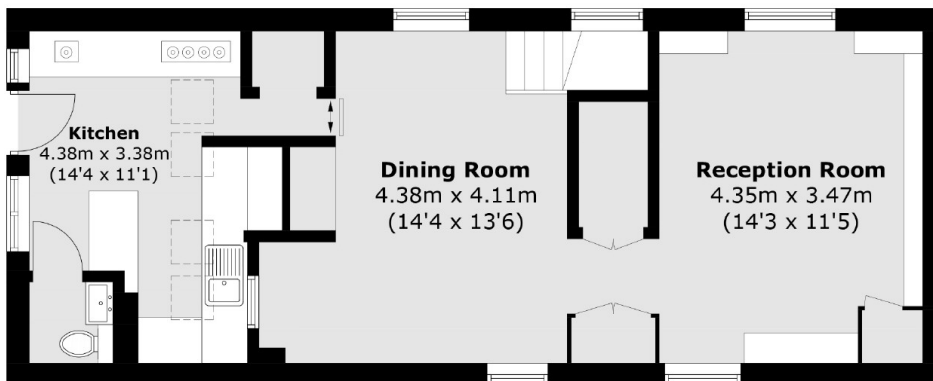
Castlebar Hill, London, W5



Outhouse
(Not Shown In Actual Location / Orientation)



First Floor



Ground Floor

Total area (approx.): 90.9 sq. m (978.4 sq. ft)
Outhouse (approx.): 25.5 sq. m (274.5 sq. ft)