



Shirley Gardens, W7

£445,000

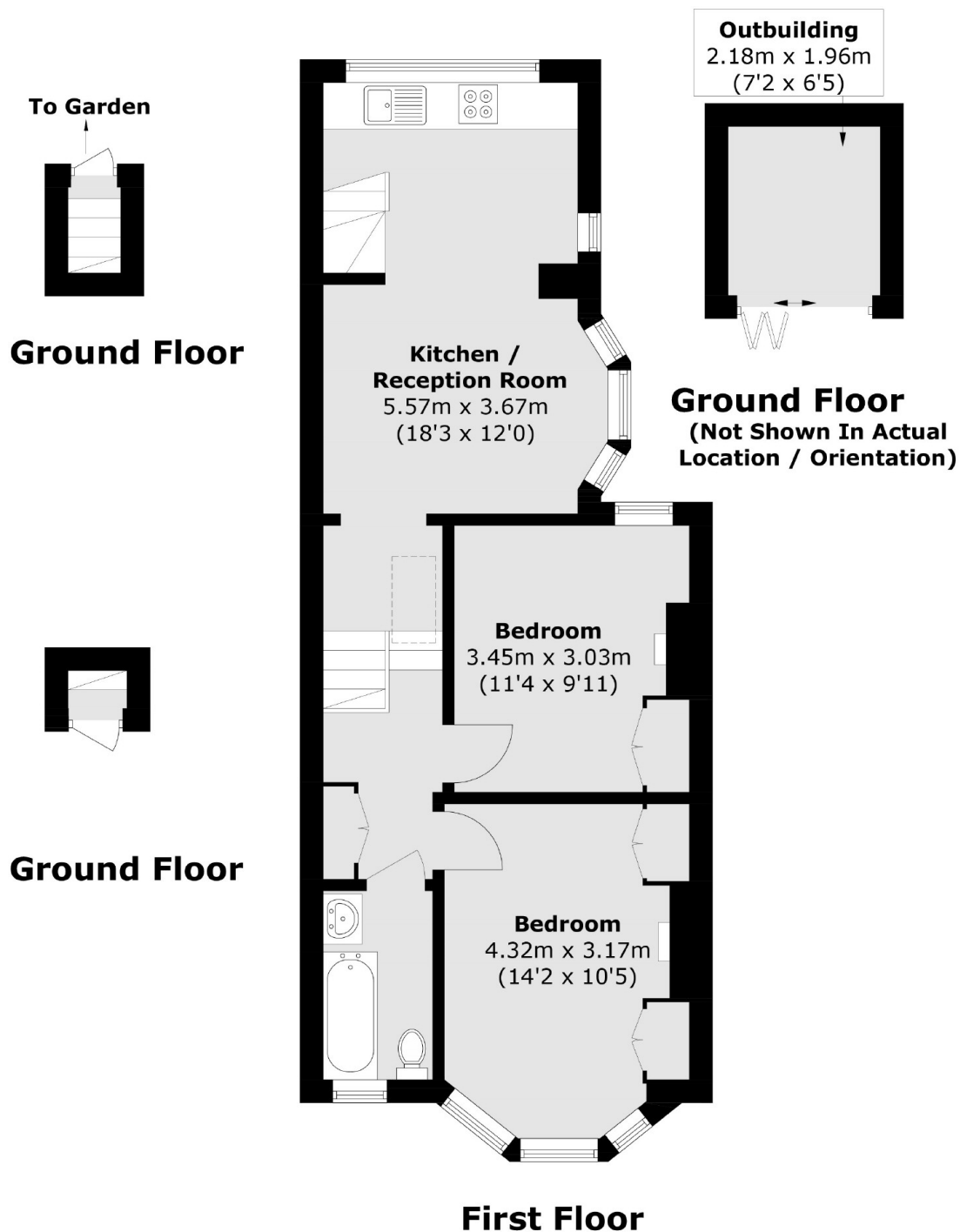
This first floor period conversion apartment in excellent condition throughout and updated by the current owners. There are two double bedrooms, an open-plan kitchen/living area and a private garden with additional outbuilding/home office. The lease has also been recently extended.

Ideally located between Hanwell and West Ealing stations with the fast Elizabeth Line trains and National Rail services. The surrounding parks and friendly village pubs make this a desirable location.

Features

- Two Bedrooms
- First Floor
- Private Garden
- Home Office/Outbuilding
- Close To Station
- Recent Lease Extension

Shirley Gardens, London, W7



Total area (approx.): 55.9 sq. m (601.7 sq. ft)
Outbuilding area (approx.): 4.5 sq. m (48.4 sq. ft)