



Manor Road, W13

£575,000

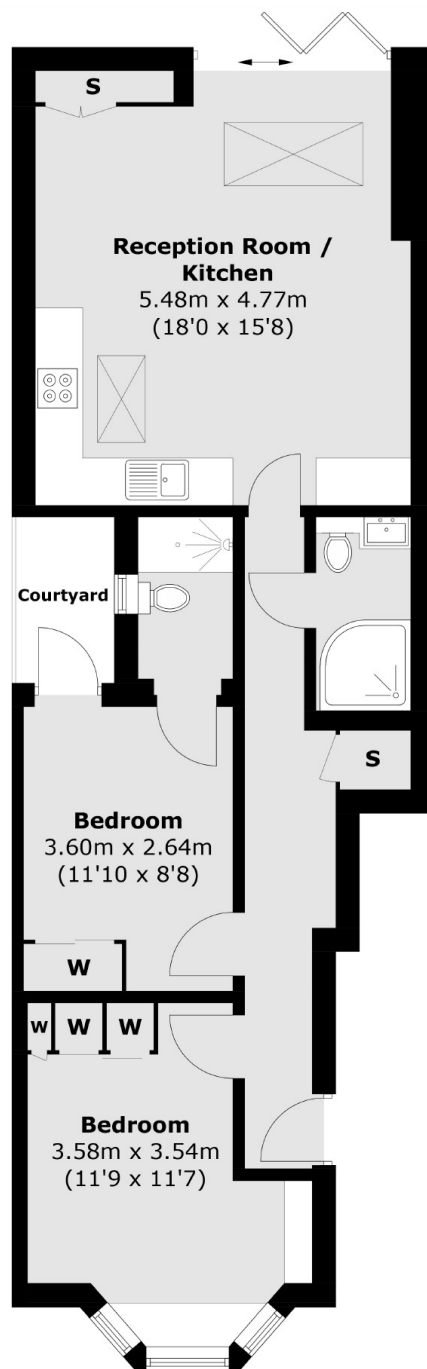
Occupying the whole ground floor is this recently converted two bedroom, two bathroom period conversion flat with a private garden and nearly 700 sq.ft of living space.

Manor Road is perfectly positioned just moments from the West Ealing Crossrail station, providing access to Bond Street in fifteen minutes. There is a Waitrose superstore close by and easy access to the shops and amenities that Ealing Broadway has to offer.

Features

- Two Bedrooms
- Two Bathrooms
- Ground Floor
- Private Garden
- Share Of Freehold
- Close To Transport

Manor Road, London, W13



Ground Floor

Total area (approx.): 63.9 sq. m (687.8 sq. ft)

Dexters

Ealing
2 New Ealing Broadway
London
W5 2NU
Sales
020 8810 0909

Energy Rating: C. We aim to make our particulars both accurate and reliable. However they are not guaranteed; nor do they form part of an offer or contract. If you require clarification on any points then please contact us, especially if you're traveling some distance to view. Please note that appliances and heating systems have not been tested and therefore no warranties can be given as to their good working order.

 **RICS** | Regulated
Estate Agent
and Letting Agent

[dexters.co.uk](https://www.dexters.co.uk)