



Montpelier Avenue, W5

£1,645,000

Dexters



Montpelier Avenue, W5

A brand new build three double bedroom and two bathroom family home. Set behind an electronic telescopic gate with a vehicle turntable there has been no expense spared to create a peaceful and private dwelling in the heart of Ealing.

Set behind a wonderful Victorian building the inconspicuous entrance leads to a private gate, behind which sits a vehicle turntable for easy access in and out. Upon entering on the ground floor there is an expansive kitchen/living/dining area with sliding doors onto a Mediterranean style courtyard garden. To one side is a spacious receiving hallway and downstairs W.C.

To the first floor there is three large double bedrooms and two bathrooms. The principle bedroom benefits from an en-suite shower room and walk-in wardrobe. Specific modern benefits include a heat pump for the underfloor heating, a mist fire protection and sprinkler system, CCTV, entry phone, electric gate, waters softener and the remote control vehicle turntable.

Approximately 0.7 miles from Ealing Broadway Station with Elizabeth, Central, District and main line tubes and trains. Excellent local schools and easy access to the high street of Pitshanger Lane.

Features

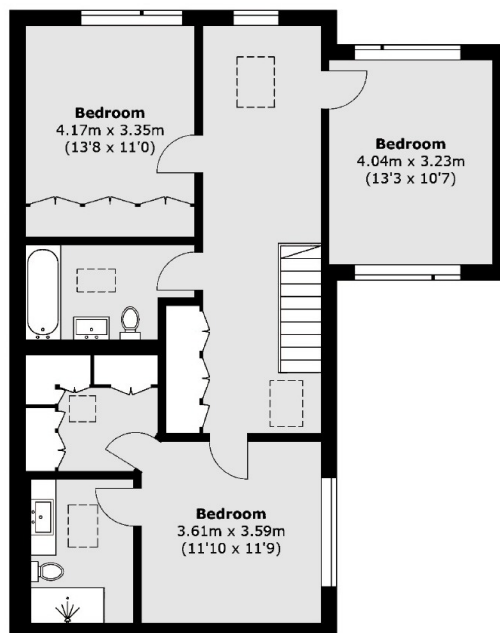
- New Build
- Three Bedrooms
- Two Bathrooms
- Electric Gates
- Off Street Parking
- No Onward Chain



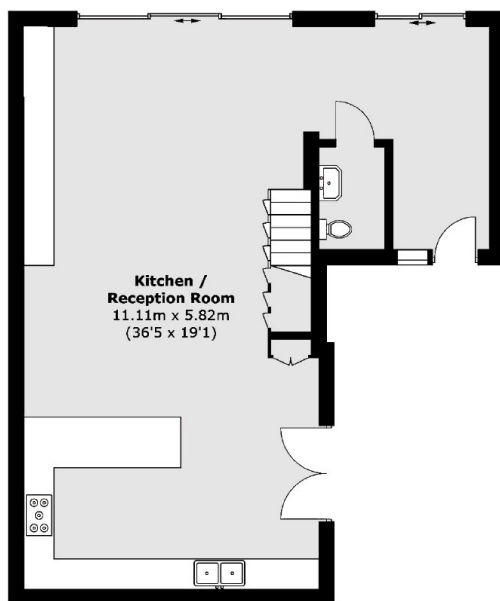




Montpelier Avenue, London, W5



First Floor



Ground Floor

Total area (approx.): 163.0 sq. m (1,754.5 sq. ft)