



Corfton Road, W5

£795,000

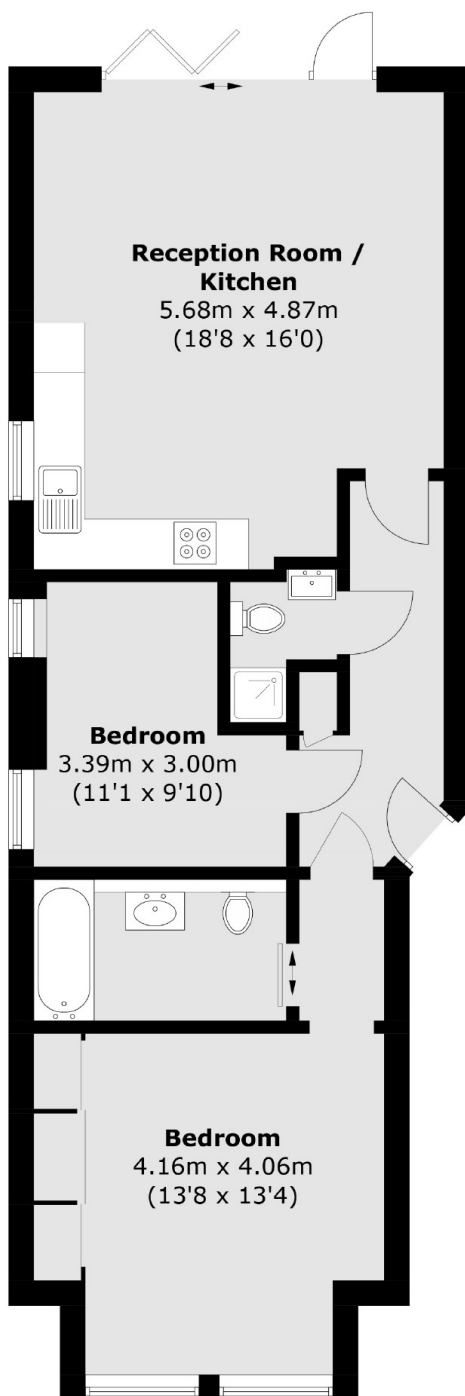
Situated on one of Ealing finest roads. This recently renovated, two bedroom, two bathroom, ground floor apartment comes with a long lease, private west facing garden and allocated parking containing power sockets for Electric vehicles.

This property is located opposite Ealing Cricket Club which is 0.3 miles from Ealing Broadway station (Central Line, Elizabeth Line, District Line and Mainline Rail) Ealing Broadway is home to many bars, restaurants, boutique shops and convenience stores.

Features

- Two Bedrooms
- Two Bathrooms
- Private Garden
- Allocated Parking
- Long Lease
- Close to Transport

Corfton Road, London, W5



Total area (approx.): 69.0 sq. m (742.7 sq. ft)

Dexters

Ealing
2 New Ealing Broadway
London
W5 2NU
Sales
020 8810 0909

Energy Rating: D. We aim to make our particulars both accurate and reliable. However they are not guaranteed; nor do they form part of an offer or contract. If you require clarification on any points then please contact us, especially if you're traveling some distance to view. Please note that appliances and heating systems have not been tested and therefore no warranties can be given as to their good working order.

 **RICS** | Regulated
Estate Agent
and Letting Agent

dexters.co.uk