



## Greenford Avenue, W7

£420,000

A modern two bedroom, two bathroom split-level flat a short distance from Hanwell Crossrail Station. With a private west-facing garden and is being offered with no onward chain.

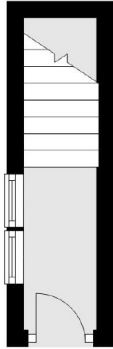
Located close to great local schools and local amenities with Hanwell Station (Crossrail) under a mile away. The green space of the 'Bunny Park' is close by also.

### Features

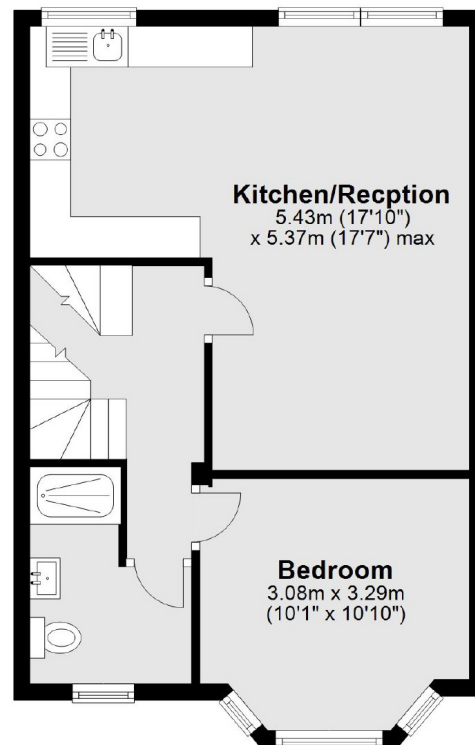
- Two Bedrooms
- Two Bathrooms
- Split Level
- Private Garden
- Crossrail
- No Onward Chain

# Greenford Avenue, London, W7

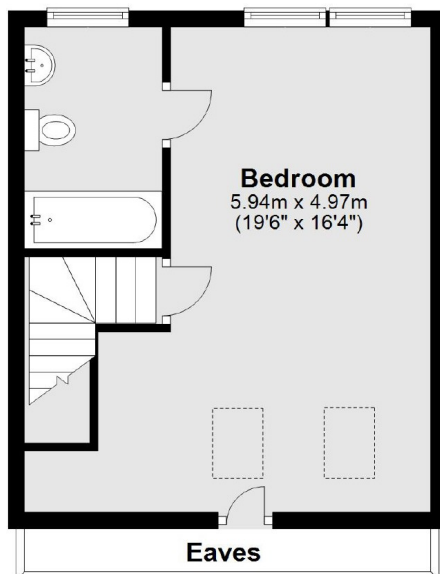
## Ground Floor



## First Floor



## Second Floor



Total area: approx. 77.8 sq. metres (837.7 sq. feet)

# Dexters

Ealing  
2 New Ealing Broadway  
London  
W5 2NU  
Sales  
020 8810 0909

Energy Rating: C. We aim to make our particulars both accurate and reliable. However they are not guaranteed; nor do they form part of an offer or contract. If you require clarification on any points then please contact us, especially if you're traveling some distance to view. Please note that appliances and heating systems have not been tested and therefore no warranties can be given as to their good working order.

 **RICS** | Regulated  
Estate Agent  
and Letting Agent

[dexters.co.uk](https://www.dexters.co.uk)