



Madeley Road, W5

£1,200,000

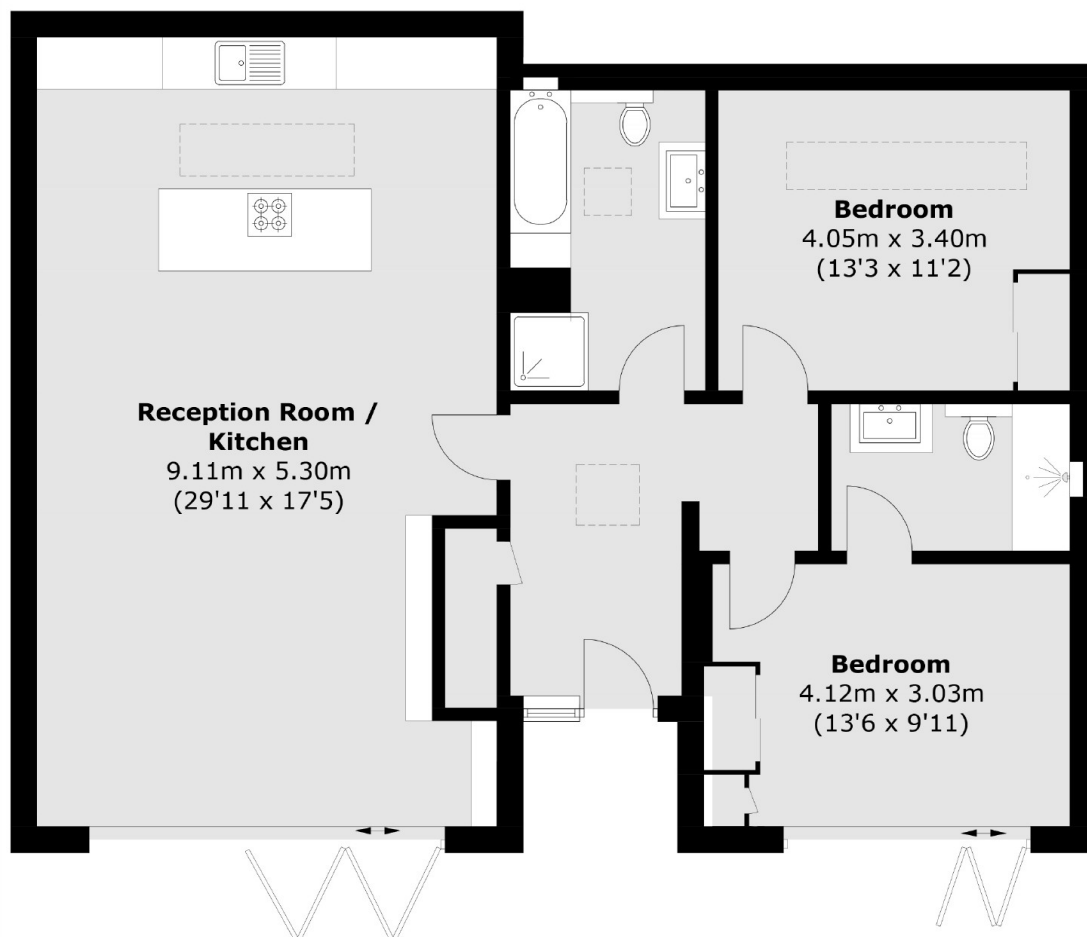
In the heart of Ealing Broadway is this secluded, newly built, freehold, two bedrooms, two bathrooms, detached cottage with a private garden. It has Bosch appliances, quartz worktops, bi-fold doors, a new homes warranty and it is being sold with no onward chain.

This property is situated 0.3 miles from Ealing Broadway where there are many boutique shops, gyms, bars and restaurants. Transport links include Ealing Broadway tube station (Central Line, District Line, Elizabeth Line and Mainline Rail) along with many local bus routes.

Features

- Two Bedrooms
- Two Bathrooms
- Detached
- Freehold
- Close to transport
- In the heart of Ealing

Madeley Road, London, W5



Total area (approx.): 101.9 sq. m (1,096.8 sq. ft)

Dexters

Ealing
2 New Ealing Broadway
London
W5 2NU
Sales
020 8810 0909

Energy Rating: B. We aim to make our particulars both accurate and reliable. However they are not guaranteed; nor do they form part of an offer or contract. If you require clarification on any points then please contact us, especially if you're traveling some distance to view. Please note that appliances and heating systems have not been tested and therefore no warranties can be given as to their good working order.

 **RICS** | Regulated
Estate Agent
and Letting Agent

[dexters.co.uk](https://www.dexters.co.uk)