



## Grange Park, W5

### £450,000

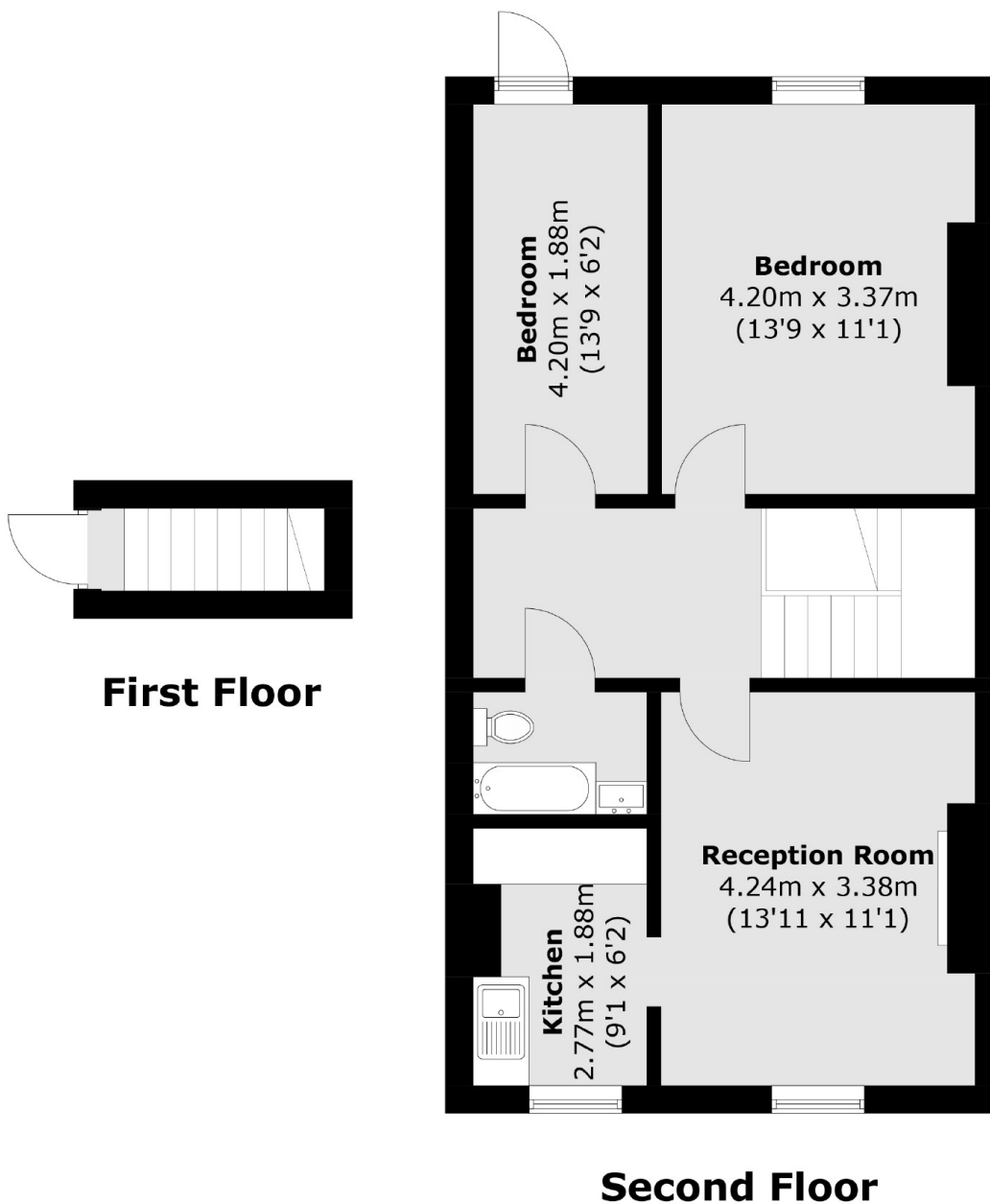
Located on the desirable Grange Park, this two-bedroom flat offers a fantastic opportunity for buyers seeking a move-in-ready home with the benefits of a share of freehold. The spacious interior boasts a well-designed layout, featuring a bright and welcoming reception room, and the property is also offered chain free.

Situated within walking distance of Ealing Broadway Station (Elizabeth line, Central Line, District Line), the property provides convenience for commuters and access to the vibrant local scene. Residents will enjoy proximity to an array of shops, restaurants making this an ideal location.

### Features

- Two Bedrooms
- Top Floor
- Chain Free
- Share of Freehold
- Close to Transport
- Close to Ealing Common

# Grange Park, London, W5



Total area (approx.): 59.4 sq. m (639.3 sq. ft)

## Dexters

Ealing  
2 New Ealing Broadway  
London  
W5 2NU  
Sales  
020 8810 0909

Energy Rating: E. We aim to make our particulars both accurate and reliable. However they are not guaranteed; nor do they form part of an offer or contract. If you require clarification on any points then please contact us, especially if you're traveling some distance to view. Please note that appliances and heating systems have not been tested and therefore no warranties can be given as to their good working order.

 **RICS** | Regulated  
Estate Agent  
and Letting Agent

[dexters.co.uk](https://www.dexters.co.uk)