



## Sherborne Gardens, W13

### £1,350,000

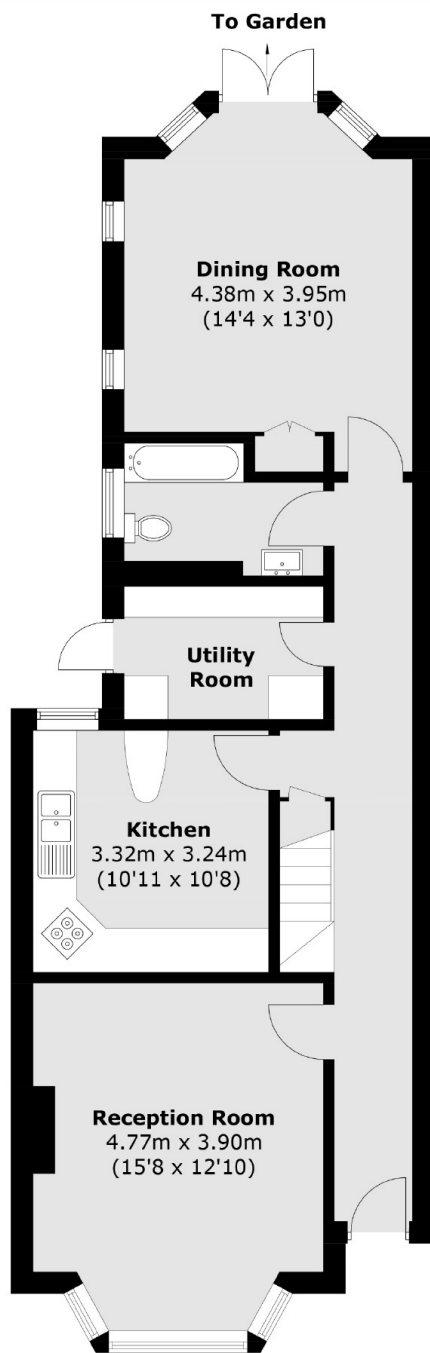
This four bedroom semi detached Edwardian family home spans over two floors with 1500 sqft of living space, with potential to extend (stpp). This property has period features throughout, a large garden, private driveway and being sold with no onward chain.

This property is located moments from the green spaces of Scotch Common. Pitshanger Lane is 0.7 miles away where there are many boutique shops, restaurants and gastro pubs. Transport links include West Ealing station (Mainline rail & Elizabeth Line). There are many local schools such as Notting Hill Girls School and North Ealing Primary among many others.

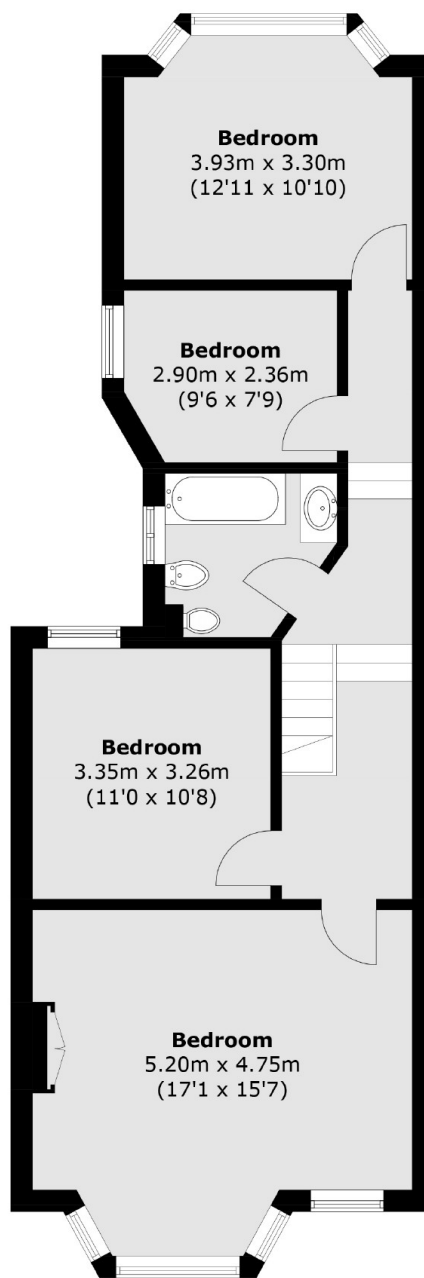
### Features

- Four Bedrooms
- Two Bathrooms
- Semi Detached
- Edwardian
- Private Driveway
- Close to Transport

# Sherborne Gardens, London, W13



**Ground Floor**



**First Floor**

Total area (approx.): 143.9 sq. m (1,548.9 sq. ft)