



## Uxbridge Road, W13

£320,000

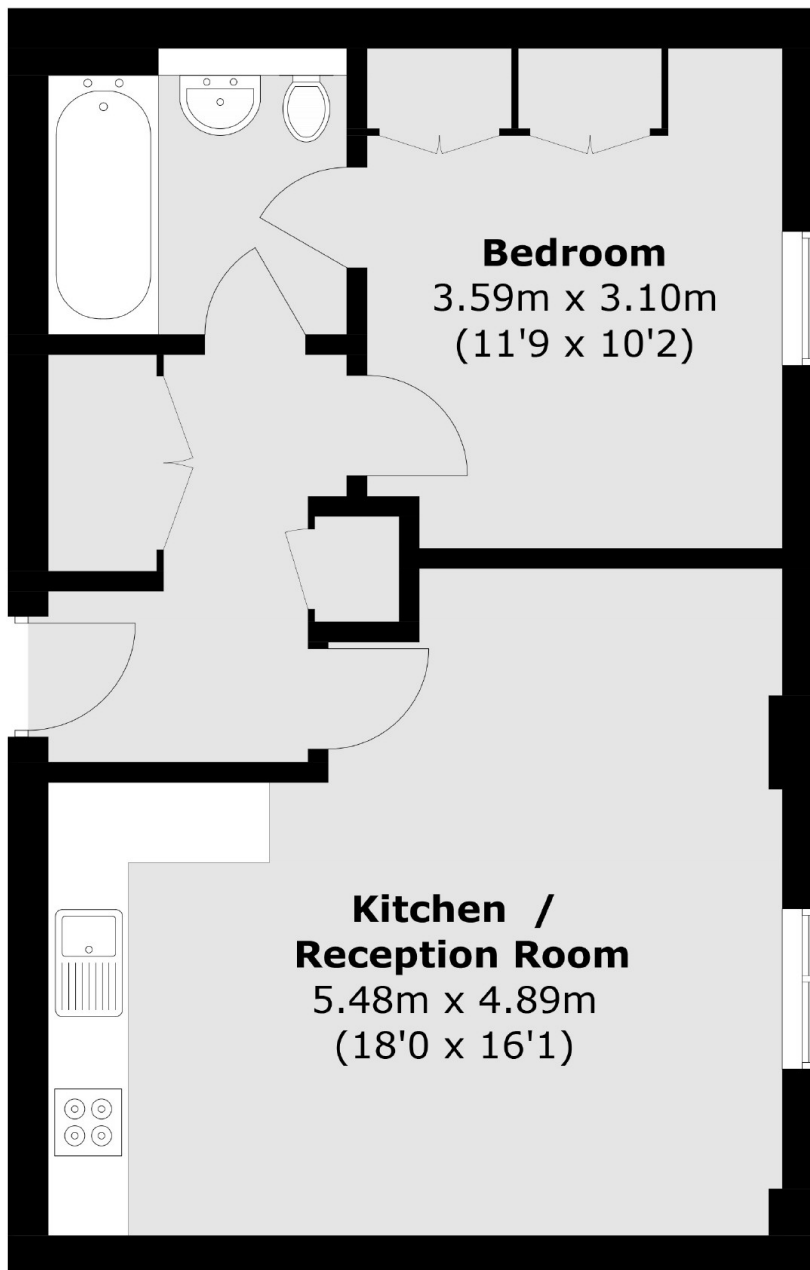
A one double bedroom apartment in a popular modern development. This first floor flat (with lift) has an open plan kitchen, reception room with living and dining areas, bathroom and a double bedroom with built in wardrobes as well as a secure video entry system.

Lovelace House is on the corner of Broughton Road and Uxbridge Road, 0.2 miles from West Ealing Station (National Rail and Crossrail).

### Features

- Double Bedroom
- Built-In Wardrobes
- Open Plan
- Bathroom
- Lift Access
- Close To Transport

# Uxbridge Road, London, W13



Total area (approx.): 48.8 sq. m (525.3 sq. ft)

**Dexters**

Ealing  
2 New Ealing Broadway  
London  
W5 2NU  
Sales  
020 8810 0909

Energy Rating: N/A. We aim to make our particulars both accurate and reliable. However they are not guaranteed; nor do they form part of an offer or contract. If you require clarification on any points then please contact us, especially if you're traveling some distance to view. Please note that appliances and heating systems have not been tested and therefore no warranties can be given as to their good working order.

 **RICS** | Regulated  
Estate Agent  
and Letting Agent

dexters.co.uk