



Robinsons Close, W13
£1,299,000



Robinsons Close, W13

A four bedroom detached family home with internal garage and large garden, set in a secluded cul-de-sac location it is the perfect family home.

On the ground floor there is a spacious open-plan reception and dining room that overlooks the mature garden to the rear. To one side you have a modern kitchen, separate to the living space. One of the four bedrooms is on the ground floor with a en-suite bath and shower attached. To the first floor there are three large double bedrooms with a family bathroom to service these three.

There is off street parking to the front, leading to an integral, and large, garage. To the rear there is a separate conservatory/home office with external independent access for the perfect "work from home" environment.

Located approximately 0.7 miles from West Ealing Elizabeth line station and just a short stroll from the award winning Pitshanger Lane for local shops, restaurants and bakeries. Close to Cleveland and Pitshanger Parks, along with Ealing Golf Club and fantastic local schools.

Features

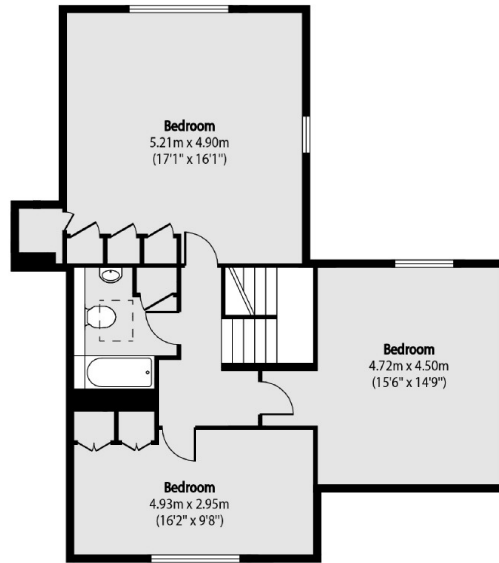
- Four Bedrooms
- Two Bathrooms
- Off Street Parking
- Garage
- Secluded Quiet Location
- Modern Family Home







Robinsons Close, London, W13



First Floor



Ground Floor

Total area (approx): 195.93 sq m (2109 sq. ft)
(Including Garage)