



The Mall, W5 £369,999

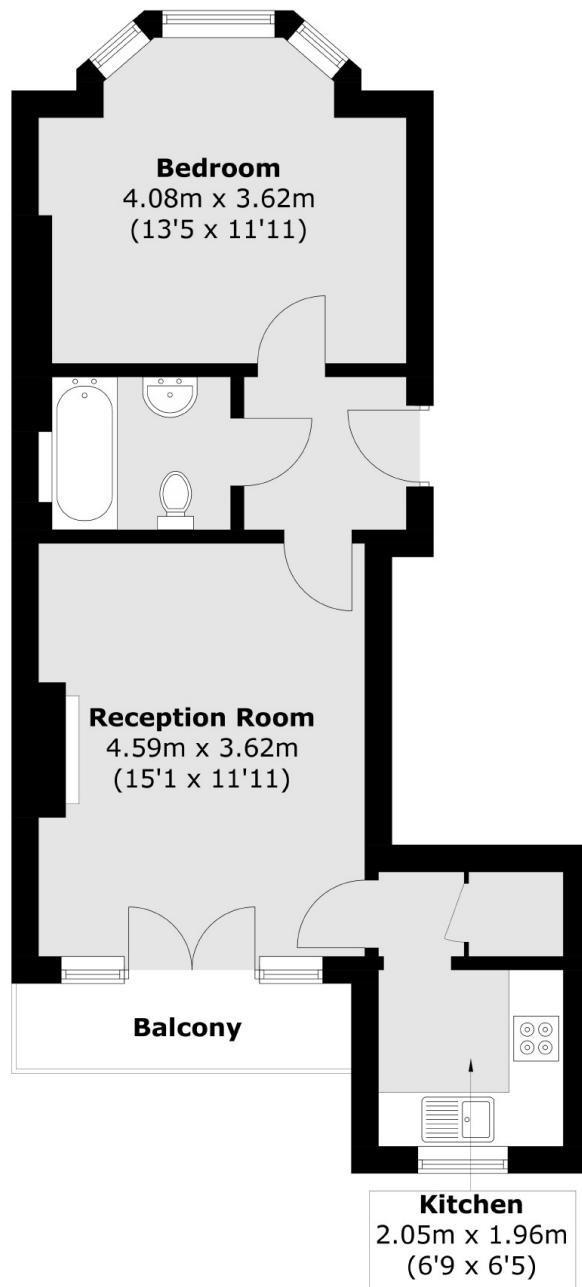
Perfect for a first time buyer or an investor. This one bedroom raised ground floor period property situated in the heart of Ealing Broadway has a private balcony, long lease and is being sold with no onward chain.

Transport links for this property include Ealing Broadway Station (Elizabeth Line, District Line, Central line and Mainline Rail) and with easy access to the A40, M4 and A406. Ealing Broadway has many boutique shops, bars, restaurants and convenient stores.

Features

- One Bedroom
- Private Balcony
- Raised Ground Floor
- Long Lease
- No Onward Chain
- Close To Transport

The Mall,
London, W5



Raised Ground Floor

Total area (approx.): 44.6 sq. m (480.1 sq. ft)
Balcony : 3.5 sq. m (37.7 sq. ft)