



Sutherland Road, W13

£425,000

A one bedroom ground floor purpose built apartment constructed approximately seven years ago. The property has been redecorated and is presented "as new" with a spacious kitchen/living area, a large double bedroom with built in wardrobes, underfloor heating, communal garden and additional private storage unit.

Perfectly located for a buy to let investor, commuter or first time buyer with the newly renovated West Ealing station Elizabeth Line enabling journeys into central London to be as fast as 16 minutes to Bond Street.

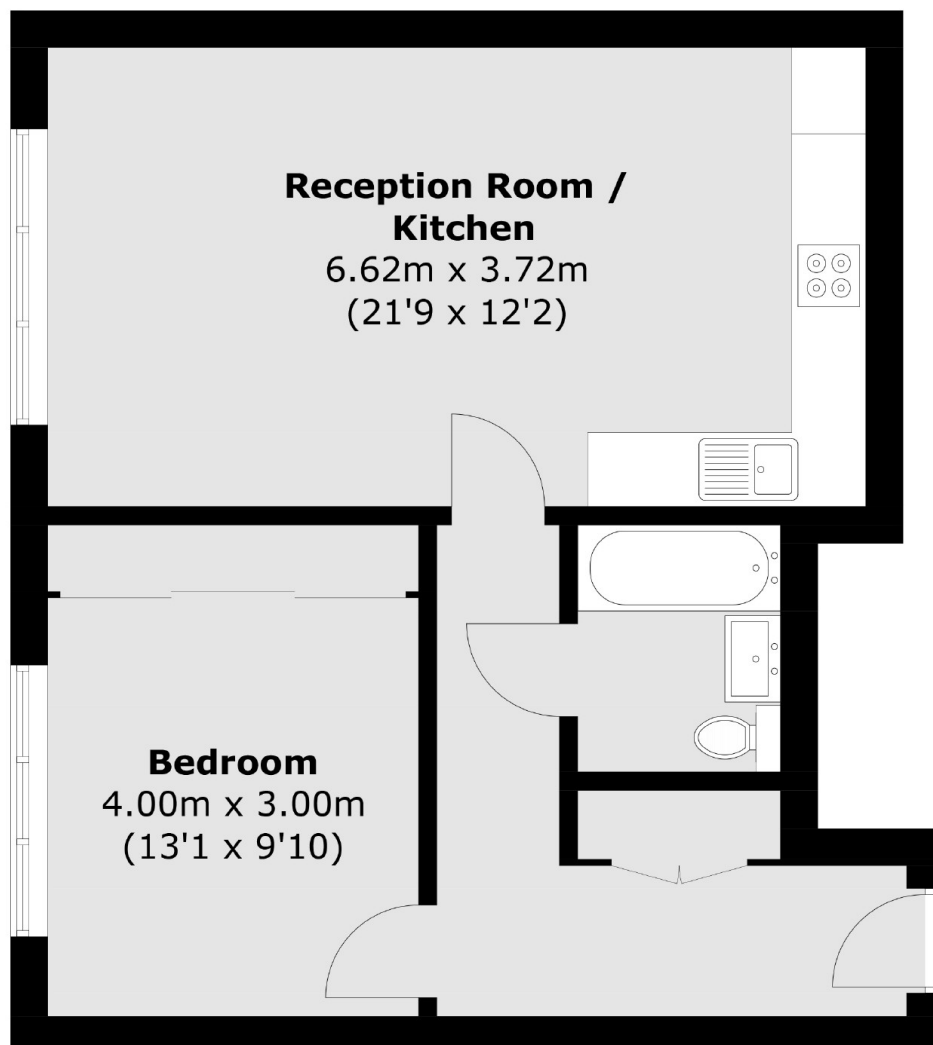
Features

- One Bedroom
- Ground Floor
- Long Lease
- Modern Development
- No Onward Chain
- Allocated Storage Shed

Sutherland Road, London, W13



**(Not Shown In Actual
Location / Orientation)**



Total area (approx.): 50.5 sq. m (543.6 sq. ft)
Storage: 2.5 sq. m (26.9 sq. ft)