



Hillcrest Road, W5

£625,000

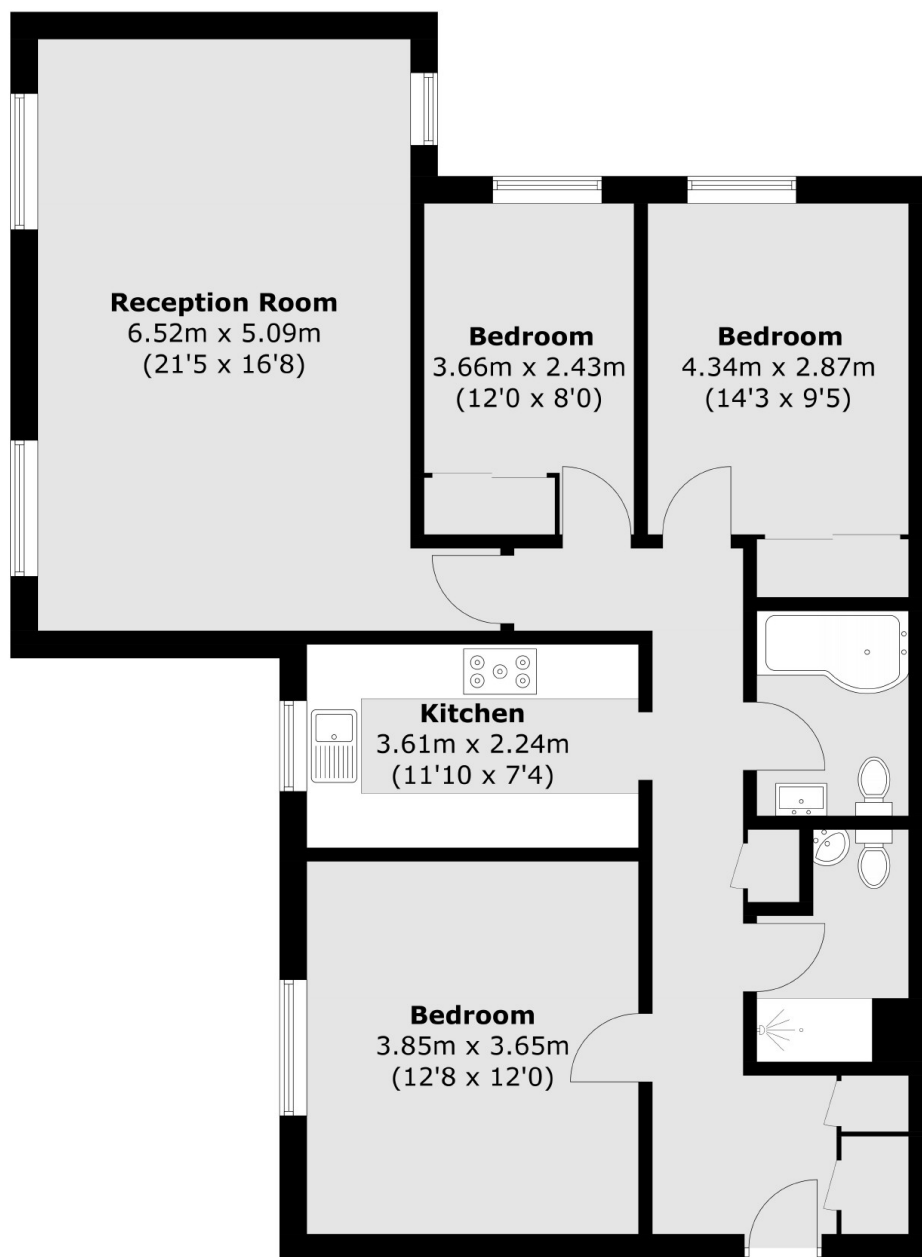
A spacious ground floor three bedroom, two bathroom apartment in excellent condition throughout. There are well maintained communal gardens, residents parking and private garage. A popular residential development on a sought after road.

Located just under a mile from Ealing Broadway station with Hanger Lane and Park Royal stations approximately 0.5 miles. There are multiple transport links with Central Line, Piccadilly Line and Elizabeth Line stations. The A40 and North Circular are also close by.

Features

- Three Bedrooms
- Two Bathrooms
- Ground Floor
- Communal Gardens
- Garage
- No Onward Chain

Hillcrest Road, London, W5



Total area (approx.): 96.7 sq. m (1,040.9 sq. ft)