



Sovereign Close, W5

£799,000

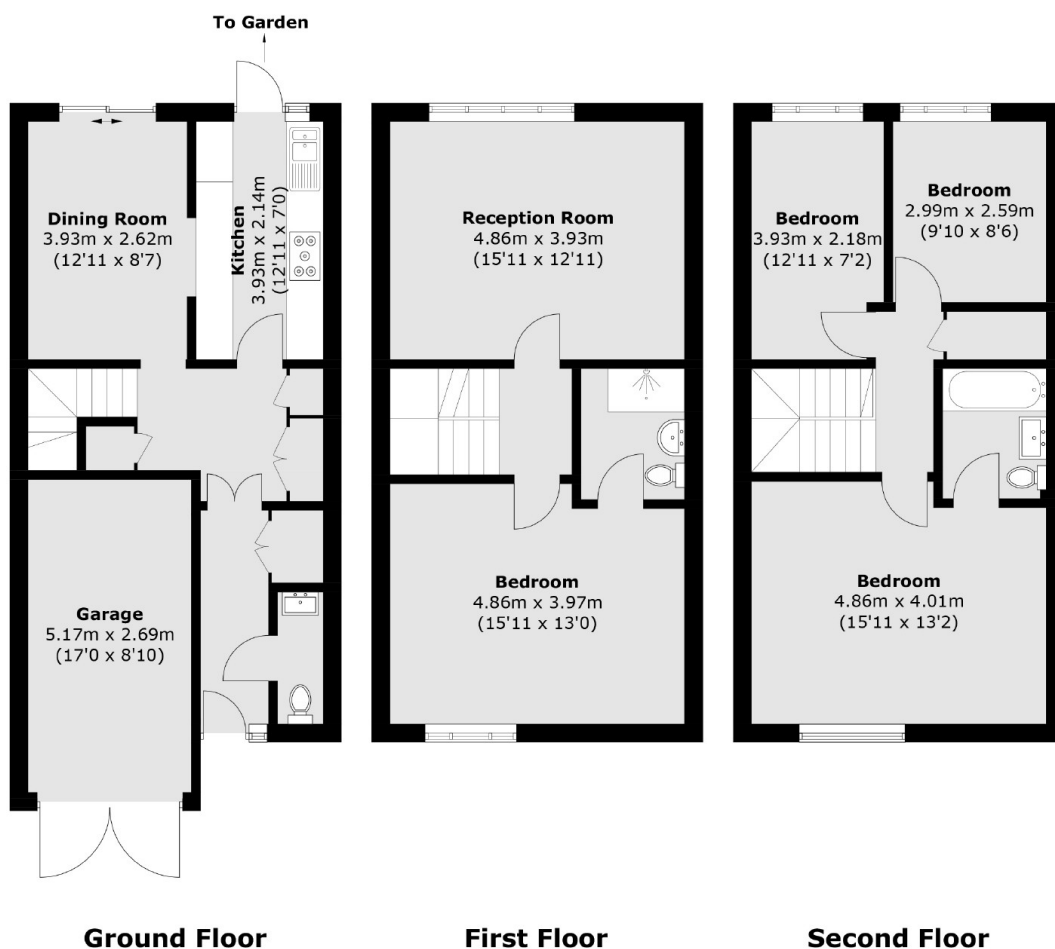
A four bedroom townhouse with flexible living accommodation over three floors. There is off street parking to the front, private garden to the rear and an internal garage too. There is an en-suite bathroom to the principle bedroom and family bathroom on the top floor.

Located within a quiet Cul-De-Sac there is easy access to Ealing Broadway with the new Elizabeth Line, Central and District Line services. The award winning Pitshanger Lane is close by with a wide range of coffee shops, restaurants, shops and amenities.

Features

- Four Bedrooms
- Two Bathrooms
- Townhouse
- Off Street Parking
- Quiet Location
- Cul-De-Sac

Sovereign Close, London, W5



Total area (approx.): 133.5 sq. m (1,437.0 sq. ft)
Garage: 14.3 sq. m (153.9 sq. ft)