



Mountfield Road, W5

£1,495,000

Dexters



Mountfield Road, W5

Perfect for a family and set in the heart of Ealing Broadway is this modern townhouse. Built in 2013 and still in immaculate condition it comes with three double bedrooms with an en-suite bathroom to each of the bedrooms, a reception room, a kitchen diner and allocated parking.

Entering on the ground floor the property has a large reception, WC and direct access to the west facing terrace. On the lower ground level, there is a large kitchen with a dining area with bi-folding doors leading to the walled garden.

To the first floor there are two double bedrooms both with en suite shower rooms. Continuing to the second floor there is the principal suite with a private bathroom and balcony.

This property is 0.2 miles from Ealing Broadway Station (Elizabeth Line, District Line, Central Line and Mainline Rail). Other transport links include many local bus routes along with easy access to the A40, A406, A4 and M4. Ealing Broadway consists of many boutique shops, bars, restaurants, salons and convenience stores.

Features

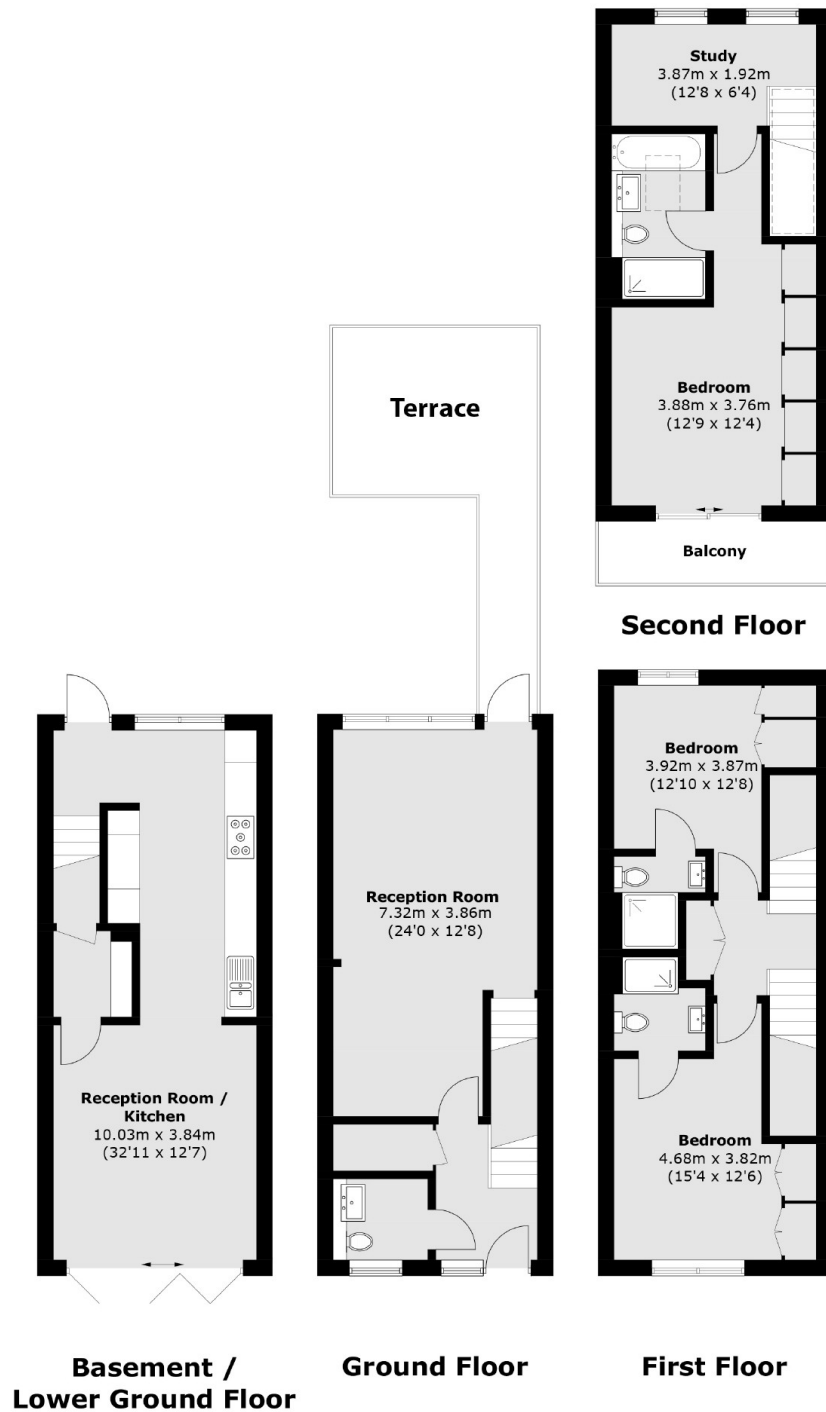
- Three Bedrooms
- Three Bathrooms
- Allocated Parking
- Private Balcony
- Close to Transport
- No Chain







Mountfield Road, London, W5



Total area (approx.): 155.2 sq. m (1670.6 sq. ft)
Balcony area (approx.): 21.9 sq. m (235.7 sq. ft)