



## Freeland Road, W5

£975,000

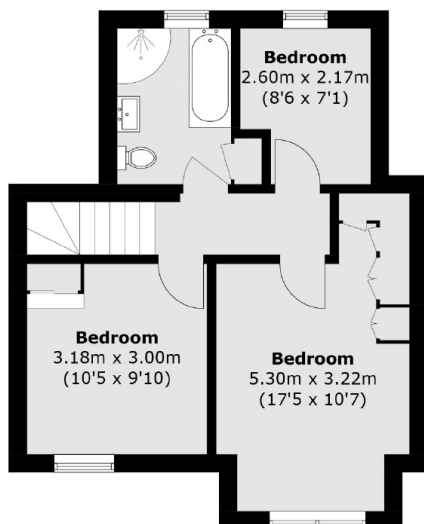
This recently modernised three/four bedroom family home is split over three floors and provides versatile living accommodation. There is a private garden to the rear and on street residents parking to the front.

Located moments from the green space of Ealing Common and approximately half a mile from Ealing Broadway with Elizabeth, Central and District Lines. Ealing Common station with District and Piccadilly line is just 0.3 miles.

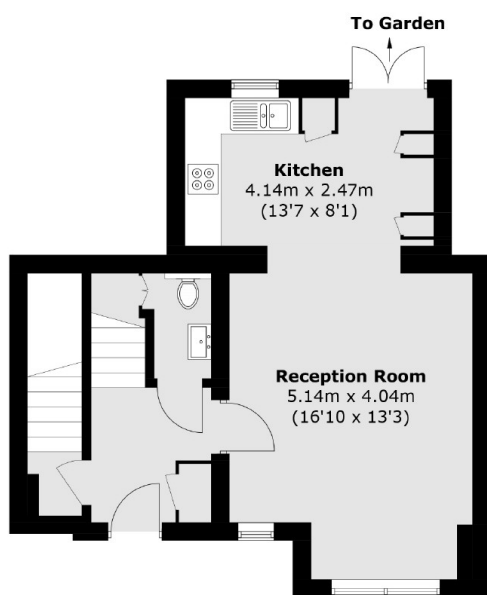
### Features

- Four Bedrooms
- Recently Modernised
- Private Garden
- Open-Plan Living
- Utility Room
- Close To Transport

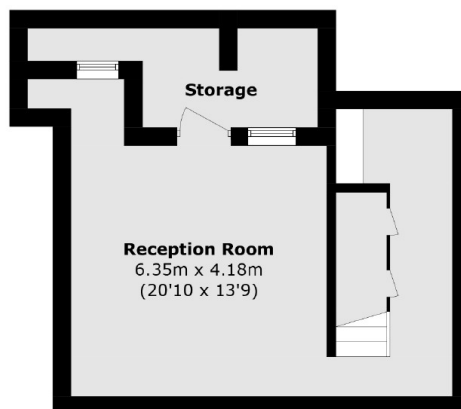
# Freeland Road, London, W5



**First Floor**



**Ground Floor**



**Basement**

Total area (approx.): 124.0 sq. m (1,334.7 sq. ft)  
(Including Storage In Basement )