



Mount Park Road, W5

£500,000

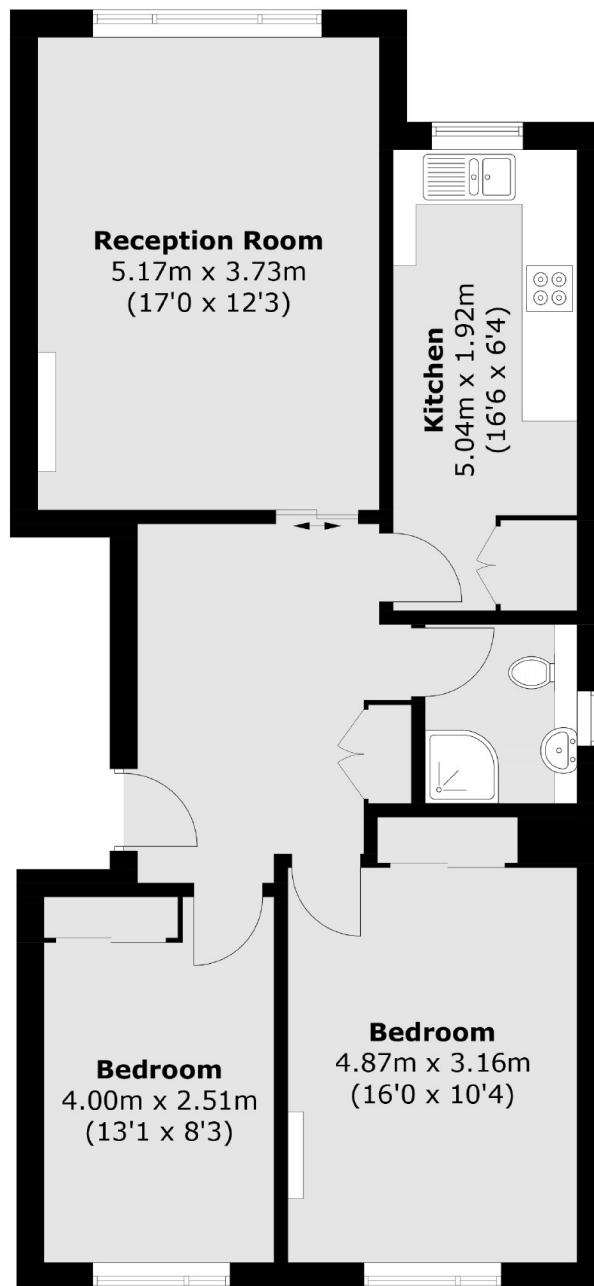
A top floor two double bedroom purpose built apartment that has been modernised by the current occupiers. A new bathroom and kitchen provide modern convenience whilst retaining beautiful parquet flooring. There is the added benefit of garage to the rear.

Located approximately half a mile from the busy transport hub of Ealing Broadway with the new Elizabeth Line, Central, District and National Rail services. There are excellent local schools such as Montpelier Primary and St Benedicts.

Features

- Two Double Bedrooms
- Top Floor
- Garage
- Premier Location
- Close to Transport
- Long Lease

Mount Park Road, London, W5



Total area (approx.): 71.5 sq. m (769.6 sq. ft)

Dexters

Ealing
2 New Ealing Broadway
London
W5 2NU
Sales
020 8810 0909

Energy Rating: D. We aim to make our particulars both accurate and reliable. However they are not guaranteed; nor do they form part of an offer or contract. If you require clarification on any points then please contact us, especially if you're traveling some distance to view. Please note that appliances and heating systems have not been tested and therefore no warranties can be given as to their good working order.

 **RICS** | Regulated
Estate Agent
and Letting Agent

[dexters.co.uk](https://www.dexters.co.uk)