



Mount Park Road, W5

£550,000

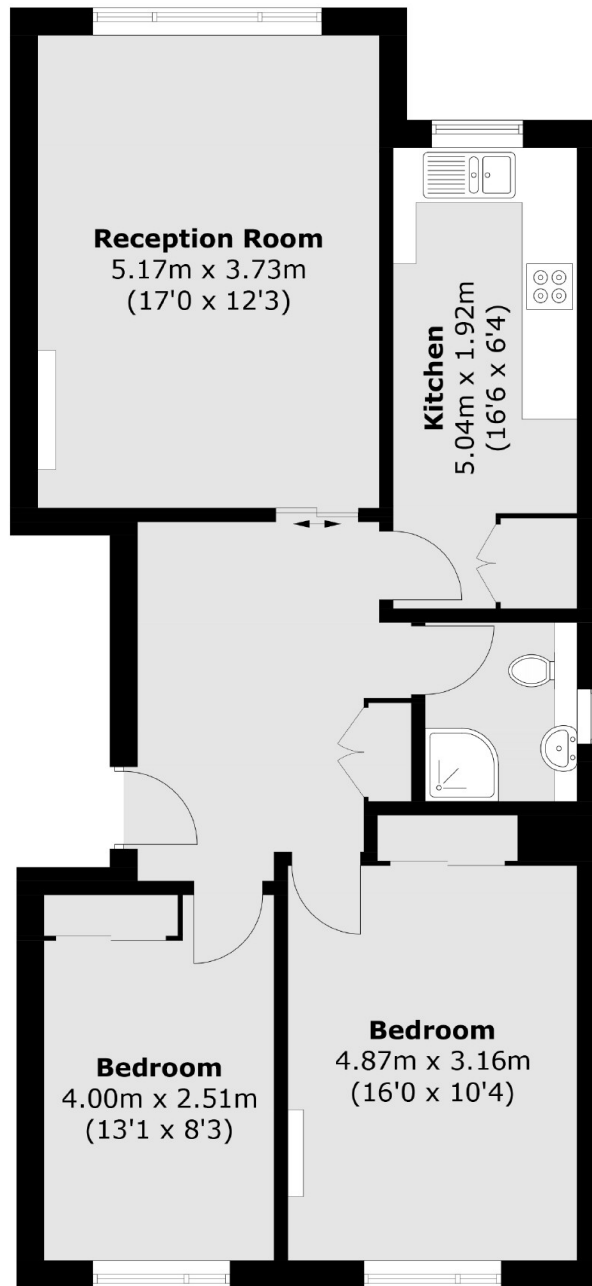
A top floor two double bedroom purpose built apartment that has been modernised by the current occupiers. A new bathroom and kitchen provide modern convenience whilst retaining beautiful parquet flooring. There is the added benefit of garage to the rear.

Located approximately half a mile from the busy transport hub of Ealing Broadway with the new Elizabeth Line, Central, District and National Rail services. There are excellent local schools such as Montpelier Primary and St Benedicts.

Features

- Two Double Bedrooms
- Top Floor
- Garage
- Premier Location
- Close to Transport
- Long Lease

Mount Park Road, London, W5



Total area (approx.): 71.5 sq. m (769.6 sq. ft)