



## Argyle Road, W13

£625,000

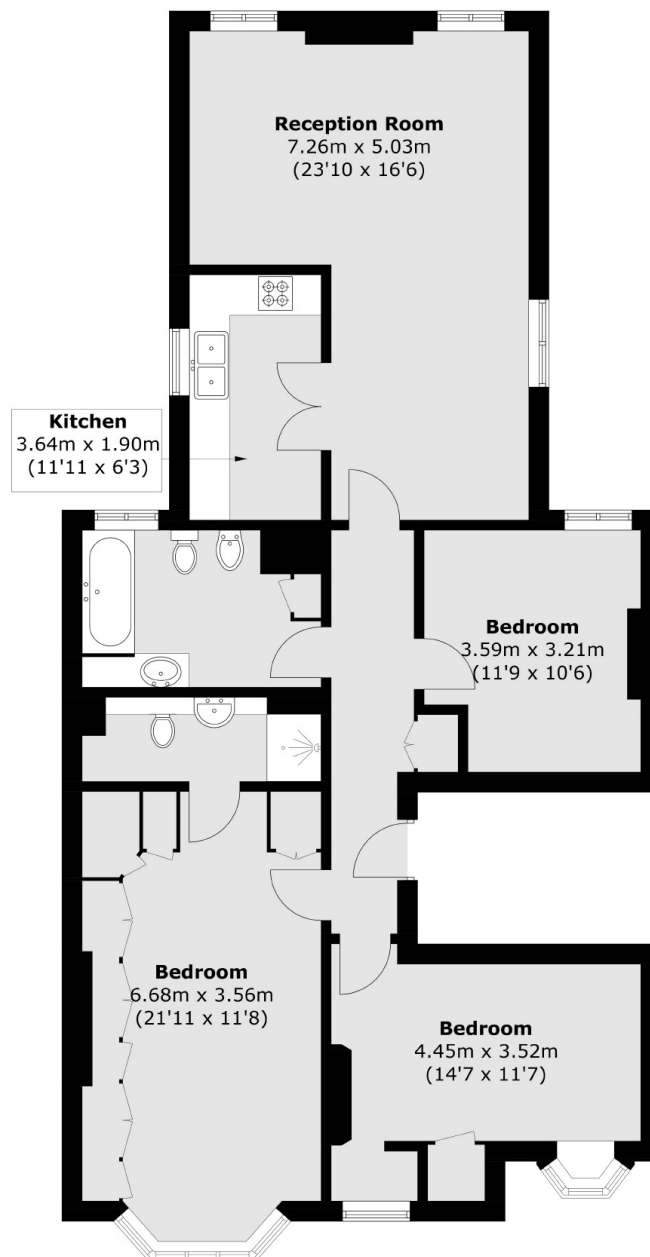
Perfect for a family this first floor, three bedrooms, two bathrooms Mock-Tudor 1930's apartment is offered with no onward chain, front garden and allocated parking for multiple cars. There is a large reception area, en-suite to the principle bedroom and large family bathroom.

Located approximately 0.7 miles from West Ealing Elizabeth line station and just a short stroll from the award winning Pitshanger Lane for local shops and restaurants. There are excellent local schools as well as Cleveland and Pitshanger Parks.

### Features

- Three Bedrooms
- Two Bathrooms
- First Floor
- Allocated Parking
- Large Reception Room
- Share of Freehold
- No Onward Chain
- Close to Transport

# Argyle Road, London, W13



Total area (approx.): 108.6 sq. m (1,169.0 sq. ft)