



Mattock Lane, W5

£689,000

Situated on the highly sought-after Mattock Lane, this stunning three-bedroom residence offers a rare opportunity to live on one of Ealing's most prestigious roads. This chain-free property boasts a spacious layout featuring three generously-sized bedrooms and two bathrooms. The property comes with allocated parking and a share of the freehold.

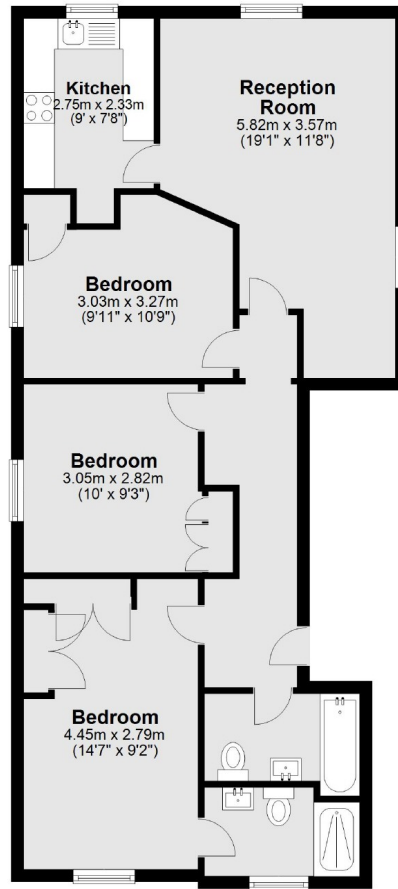
Set in the heart of Ealing and opposite Walpole Park. Conveniently located to the shops, restaurants, bars and convenience stores. Transport links include Ealing Broadway (Elizabeth Line, Central Line, District Line and Main Line Rail), along with many bus routes.

Features

- Three Double Bedrooms
- Two Bathrooms
- Share of Freehold
- Allocated Parking
- Close to Transport
- No Onward Chain

Mattock Lane, London, W5

Third Floor



Total area: approx. 73.4 sq. metres (790.3 sq. feet)