



Popes Lane, W5

£399,999

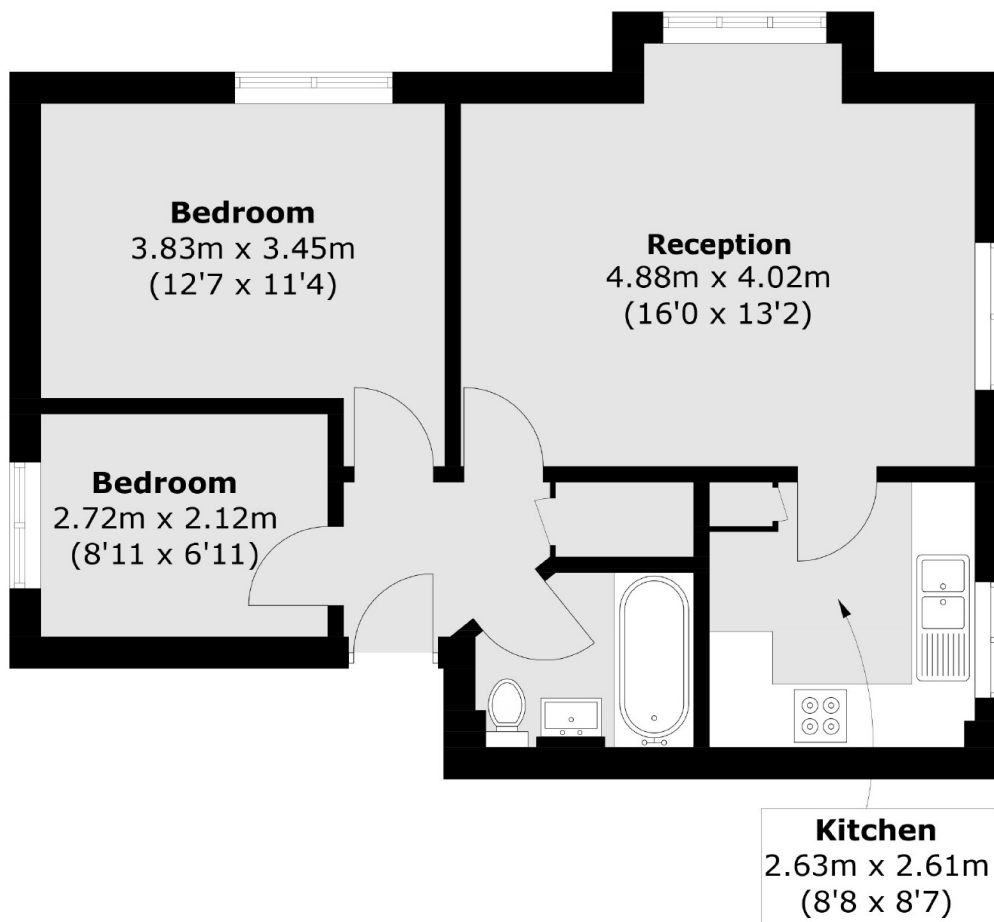
Situated moments from Gunnersbury Park This immaculately presented two bedroom apartment comes with a long lease, communal gardens and an allocated parking space. The modernised family bathroom is fitted with a fully functioning jacuzzi bathtub, that provides both comfort and luxury. The current occupiers are offering the sale with two bespoke sets of fitted storage in both bedrooms.

This property is located 0.8 miles from Acton Town tube station (District & Piccadilly) and 1 mile from Ealing Broadway station (Central Line, Elizabeth Line, Mainline Rail & District Line) Ealing Broadway also has many Boutique Shops, Salons, Bars and Restaurants.

Features

- Two Bedrooms
- First Floor
- Allocated Parking
- Close to Gunnersbury Park
- Good Transport Links
- Long Lease

Popes Lane, London, W5



Total area (approx.): 51.1 sq. m (550.0 sq. ft)