



## Pitshanger Lane, W5

£465,000

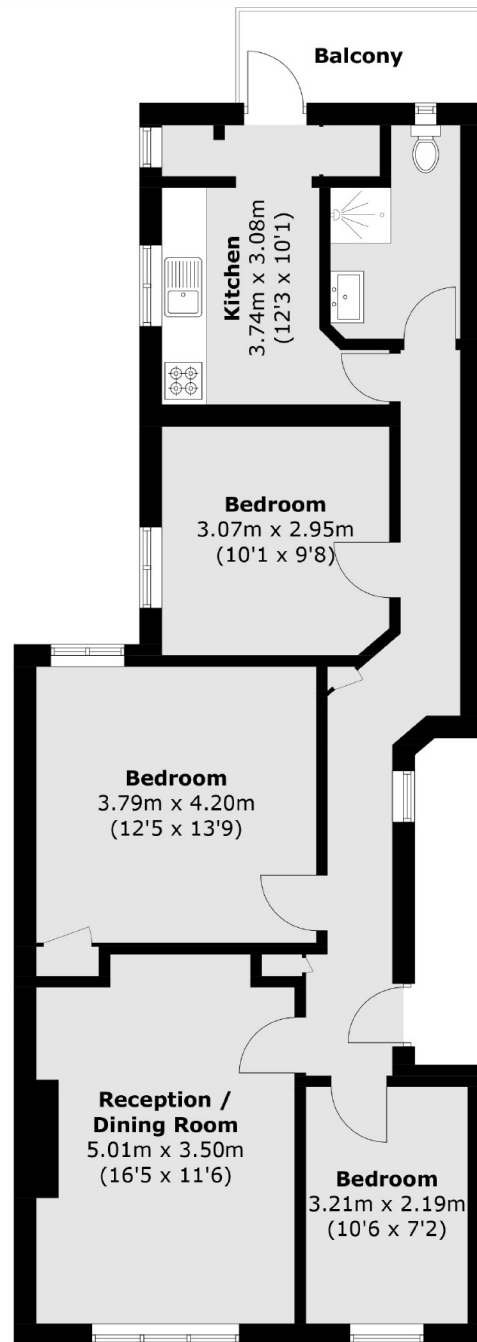
A three bedroom top floor purpose built Edwardian mansion flat with a private south facing balcony. With approximately 850sq.ft of living space, there is a spacious living room with lots of natural light and wonderful views towards Horsenden Hill.

Located on Pitshanger Lane, the award winning high street. The property is also very close to the Green Space of Pitshanger Park, Ealing Golf Club, and within the excellent North Ealing catchment of local schools including Notting Hill Girls School and North Ealing Primary School.

### Features

- Three Bedrooms
- Large Living Room
- Top Floor
- Private Balcony
- Pitshanger Location
- No Onward Chain

# Pitshanger Lane, London, W5



Total area (approx.): 76.8 sq. m ( 826.6 sq. ft)  
Balcony area : 4.0 sq. m ( 43.0 sq. ft)