



Bathgate Place, W13

£900,000

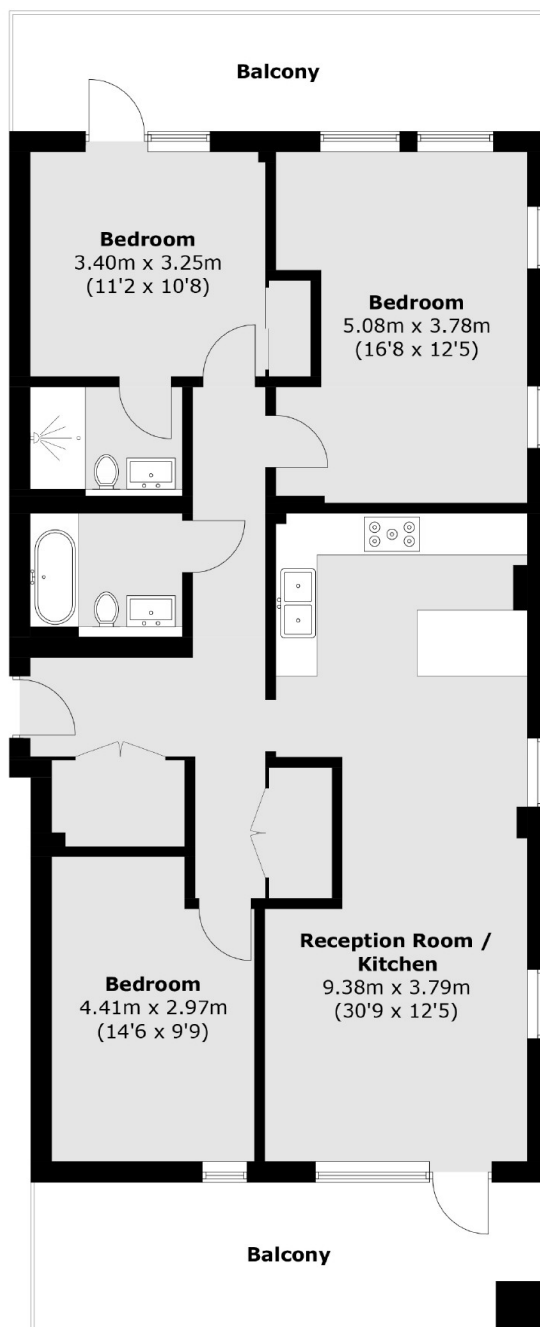
This recently constructed three bedroom apartment has incredible views towards the city and allocated underground parking. There are dual balconies from both the living room and en-suite principal bedroom. Completed in 2022 there is approximately eight years build warranty remaining.

Bathgate Place is ideally located for easy access to both West Ealing and Ealing Broadway stations with a wide range of transport options including the new Elizabeth Line, Central and District Lines. Multiple gyms, restaurants and amenities are all a short walk.

Features

- Three Bedrooms
- Two Bathrooms
- Two Balconies
- Allocated Parking
- Lift Access
- Podium Communal Gardens

Bathgate Place, London, W13



Total area (approx.): 103.5 sq. m (1,114.1 sq. ft)
Balcony : 28.7 sq. m (308.9 sq. ft)