



Northcote Avenue, W5

£540,000

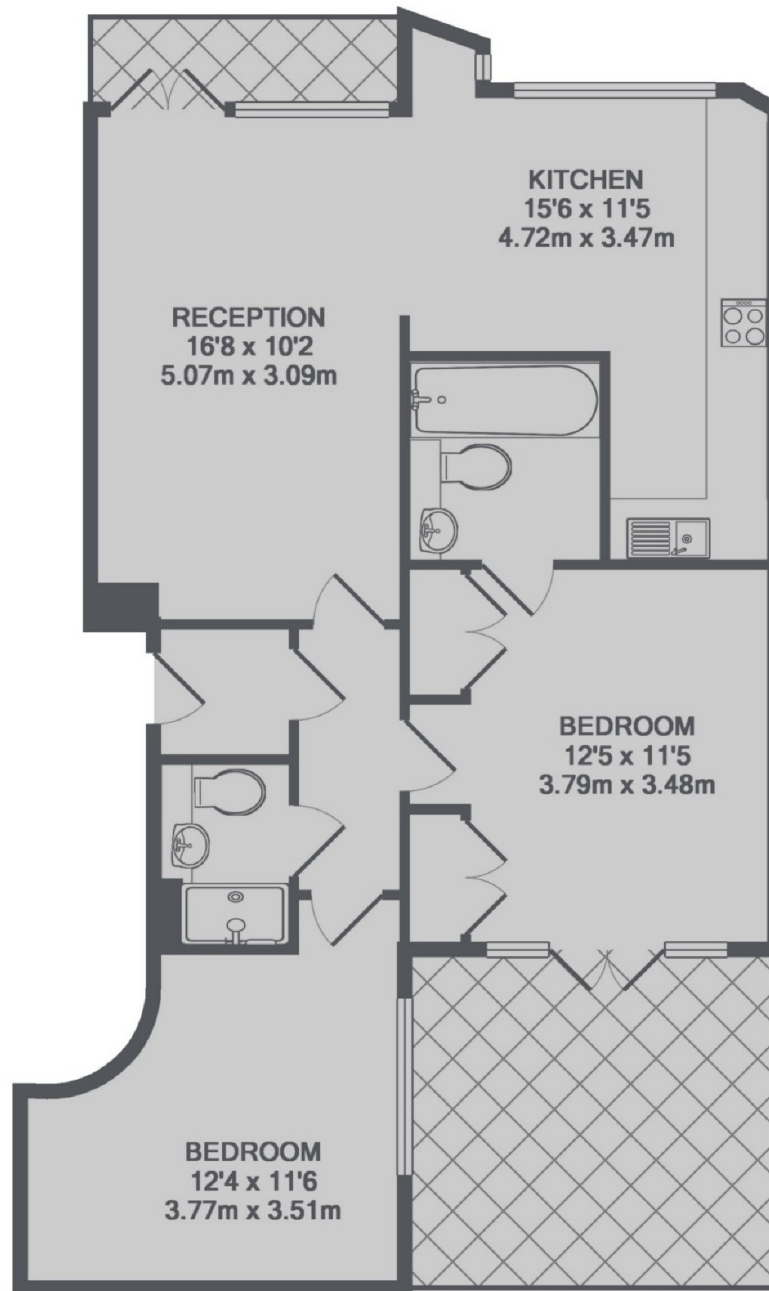
This two double bedroom and two bathroom purpose built apartment is located in the heart of Ealing Broadway. There are two private balconies, to the front and rear, along with an en-suite bathroom to the principle bedroom and a spacious, open plan kitchen/living room and allocated parking.

Set in a quiet cul-de-sac location less than a quarter of a mile from Ealing Broadway station with the Elizabeth, Central, District Lines and National Rail services. The green space of Ealing Common is a short walk away, along with the Ealing Broadway shopping centre.

Features

- Two Bedrooms
- Two Bathrooms
- No Onward Chain
- Two Balconies
- Share of Freehold
- Allocated Parking
- Central Location

Northcote Avenue, London, W5



TOTAL APPROX. FLOOR AREA 708 SQ.FT. (65.8 SQ.M.)