



The Broadway, W5

£375,000

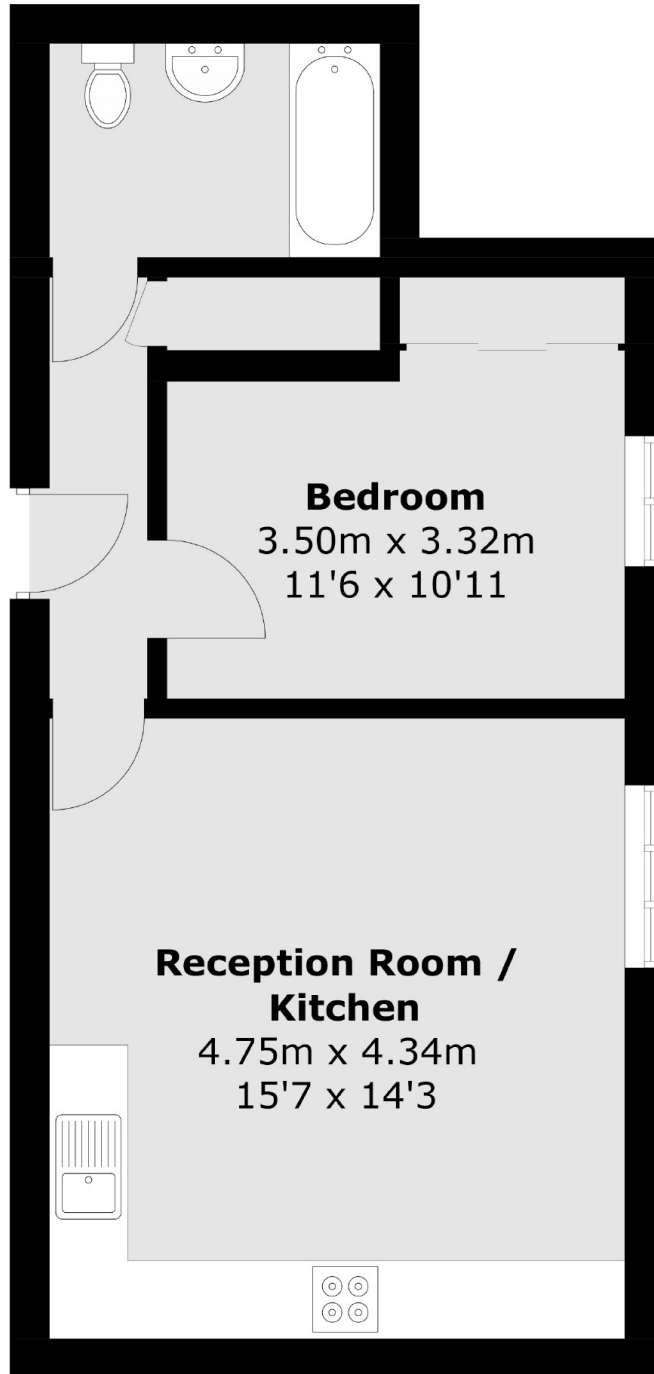
A one bedroom top floor apartment just moments from the shops, amenities and transport links of Ealing Broadway. Constructed approximately ten years ago, the property is in great condition throughout, benefiting from lift access, a lower ground storage locker and no onward chain.

Located next door to Ealing Broadway station with the new Elizabeth Line, Central, District and National Rail services. In the heart of the town with a wide range of gym's, shops, restaurants and amenities.

Features

- One Bedroom
- Top Floor
- Lift Access
- Central Location
- Constructed 10 Years Ago
- No Onward Chain

The Broadway, London, W5



Total area (approx.): 40.4 sq. m (434.9 sq. ft)

Dexters

Ealing
2 New Ealing Broadway
London
W5 2NU
Sales
020 8810 0909

Energy Rating: C. We aim to make our particulars both accurate and reliable. However they are not guaranteed; nor do they form part of an offer or contract. If you require clarification on any points then please contact us, especially if you're traveling some distance to view. Please note that appliances and heating systems have not been tested and therefore no warranties can be given as to their good working order.

 **RICS** | Regulated
Estate Agent
and Letting Agent

dexters.co.uk