



Queens Walk, W5

£399,999

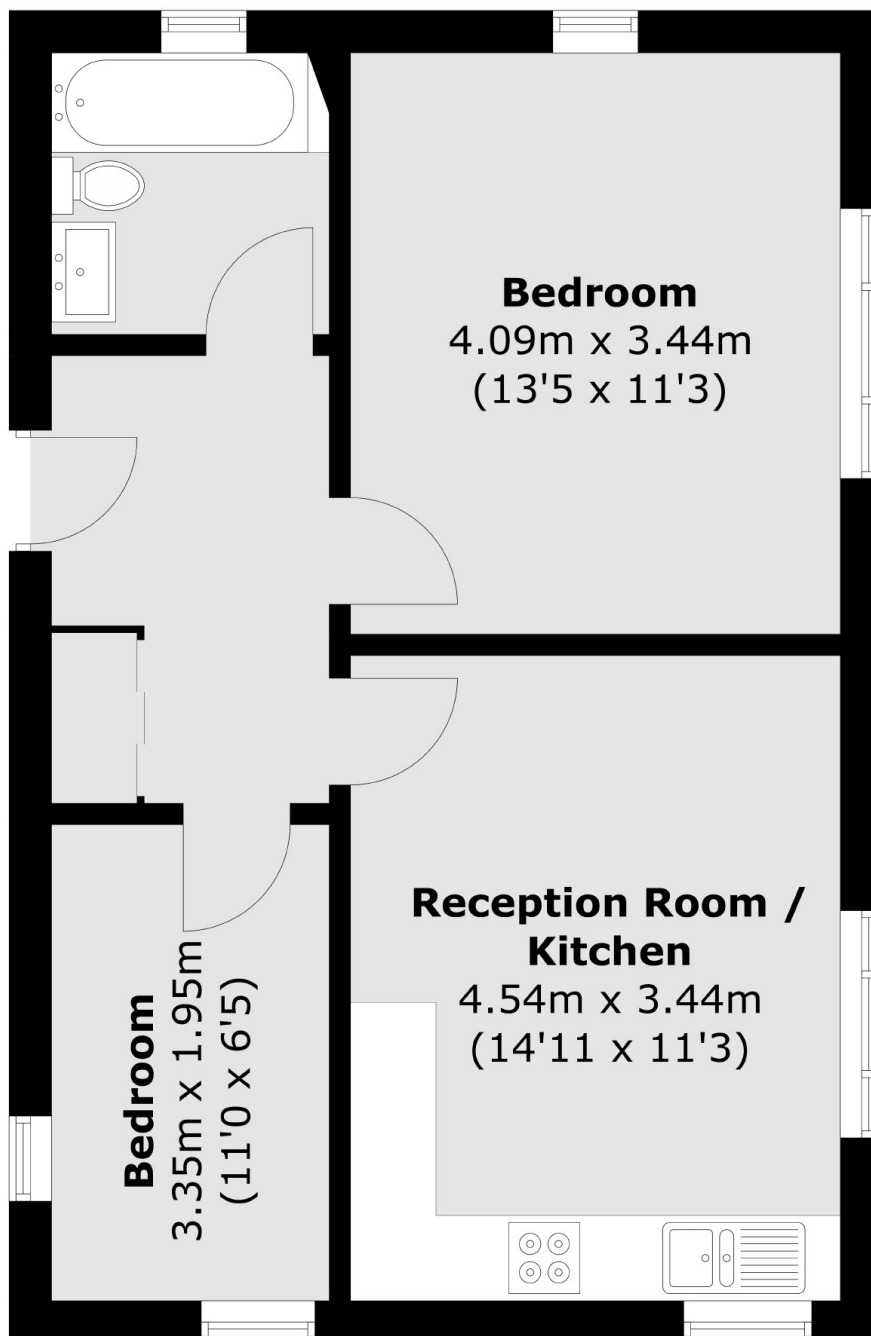
Offered to the market with no onward chain is this two bedroom ground floor flat set within mature landscaped grounds. There is an open plan kitchen/reception room with two bedrooms and modern bathroom along with a share of the freehold. A perfect buy to let or first time buy.

Located less than a mile from the busy centre and transport links of Ealing Broadway with the new Elizabeth Line, Central, District and National Rail services. The lovely Pitshanger Lane (voted best high street in London) is at the bottom of the road with its wide range of eateries and amenities.

Features

- Ground Floor
- Two Bedrooms
- No Onward Chain
- Share Of Freehold
- Purpose Built
- Excellent Condition

Queens Walk, London, W5



Total area (approx.): 48.8 sq. m (525.3 sq. ft)