



## Mount Avenue, W5

£675,000

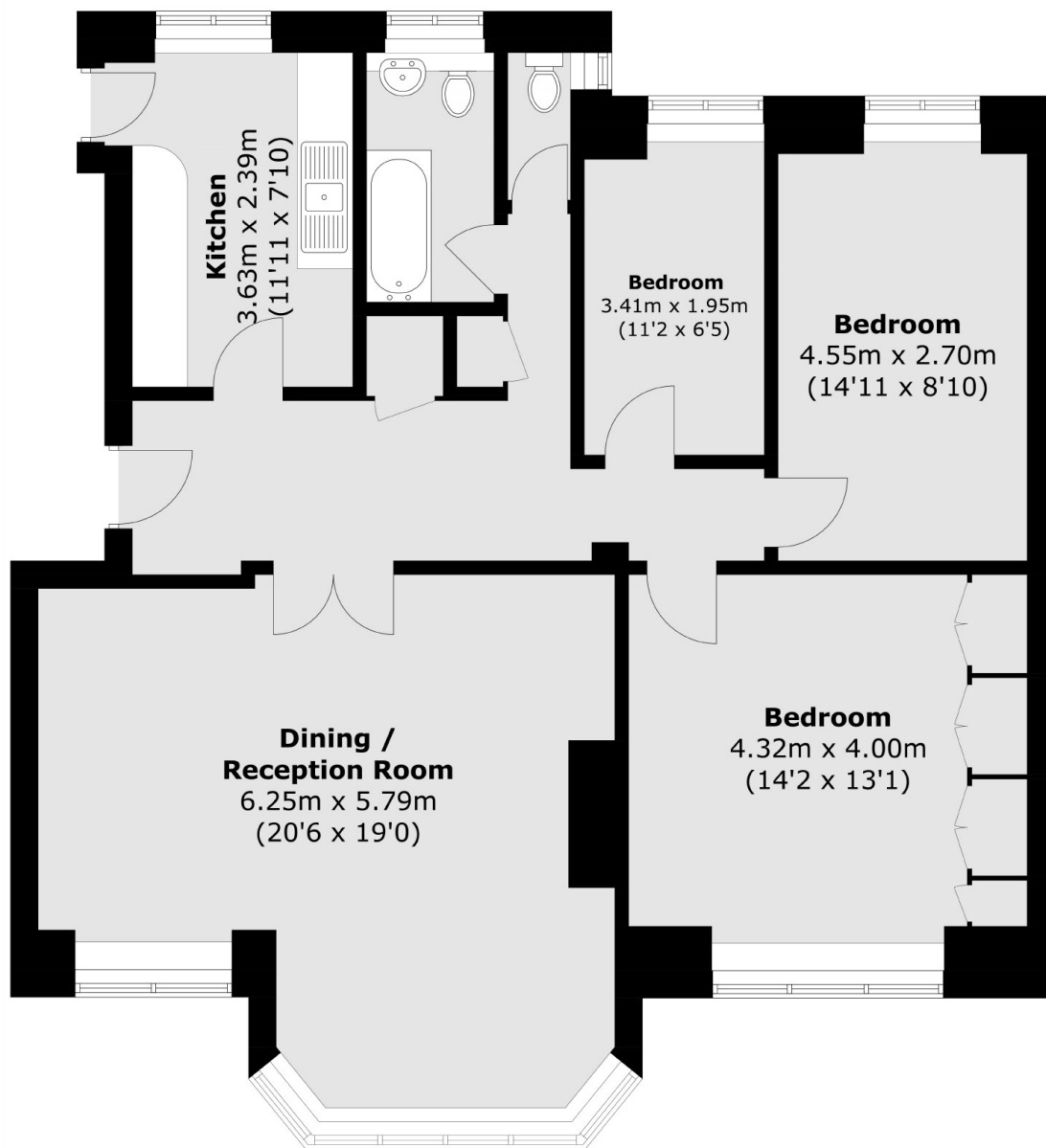
This ground floor three bedroom apartment is set within mature landscaped communal grounds and has a double reception room. Requiring modernisation, the property has direct access to the surrounding gardens and offers nearly 1100sq.f.t of living space.

Mount View is a popular residential block located next to the sought after Montpelier Primary School with easy access to the shops of Pitshanger Lane, along with the transport hub (Elizabeth, Central, District Line and National Rail) and shopping centre of Ealing Broadway.

### Features

- Three Bedrooms
- Ground Floor
- No Onward Chain
- Communal Gardens
- Share Of Freehold
- Popular Residential Area

# Mount Avenue, London, W5



Total area (approx.): 99.7 sq. m (1,073.2 sq. ft)