



## Longfield Avenue, W5

£807 Per week

A stylish two bedroom, two bathroom apartment in the Dickens Yard development finished to a high standard throughout with a private balcony, and access to residents gym.

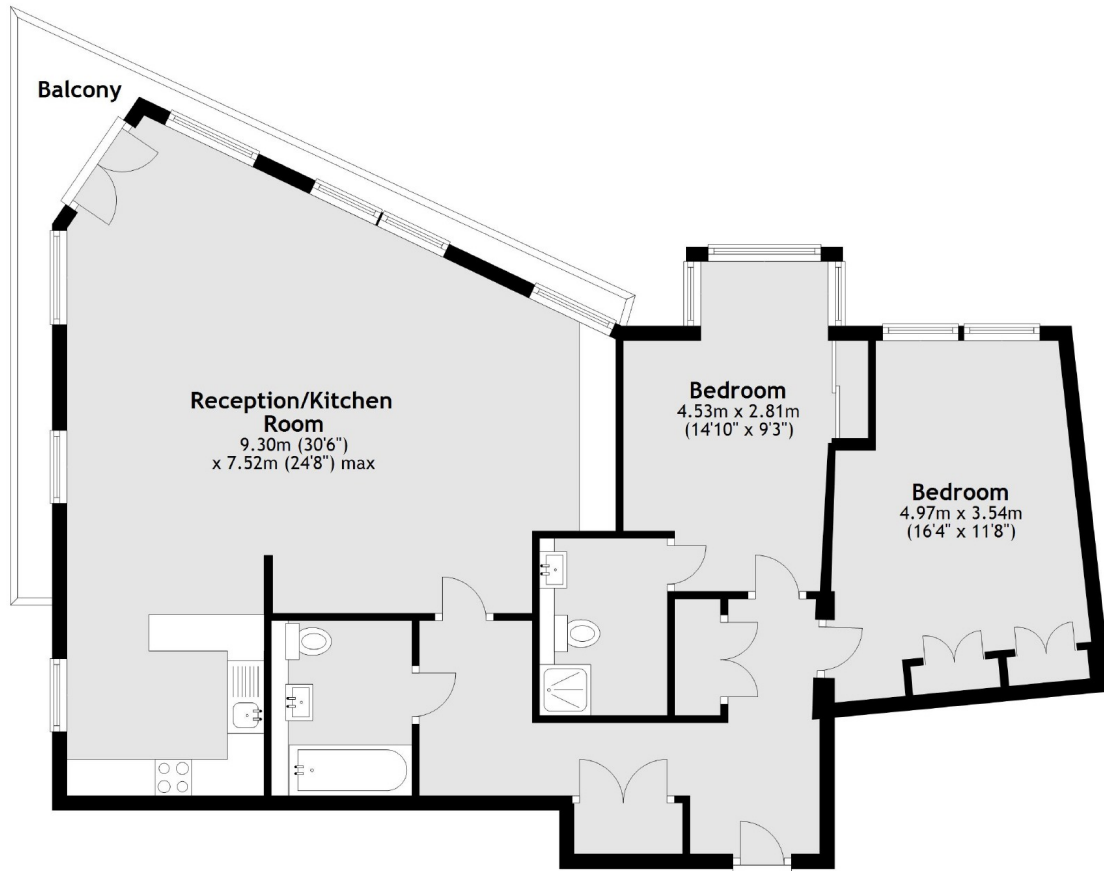
Dickens yard is ideally positioned for the transport links and many amenities of Ealing Broadway, and less than half a mile from Ealing Broadway train station.

### Features

- Two Bedrooms
- Two Bathrooms
- Open Plan
- Gym Access
- Private Balcony
- Wood Flooring

# Longfield Avenue, London, W5

## Third Floor



Main area: Approx. 97.8 sq. metres (1052.8 sq. feet)  
Plus balconies, approx. 9.3 sq. metres (99.7 sq. feet)