



## St. Marys Square, W5 £799,000

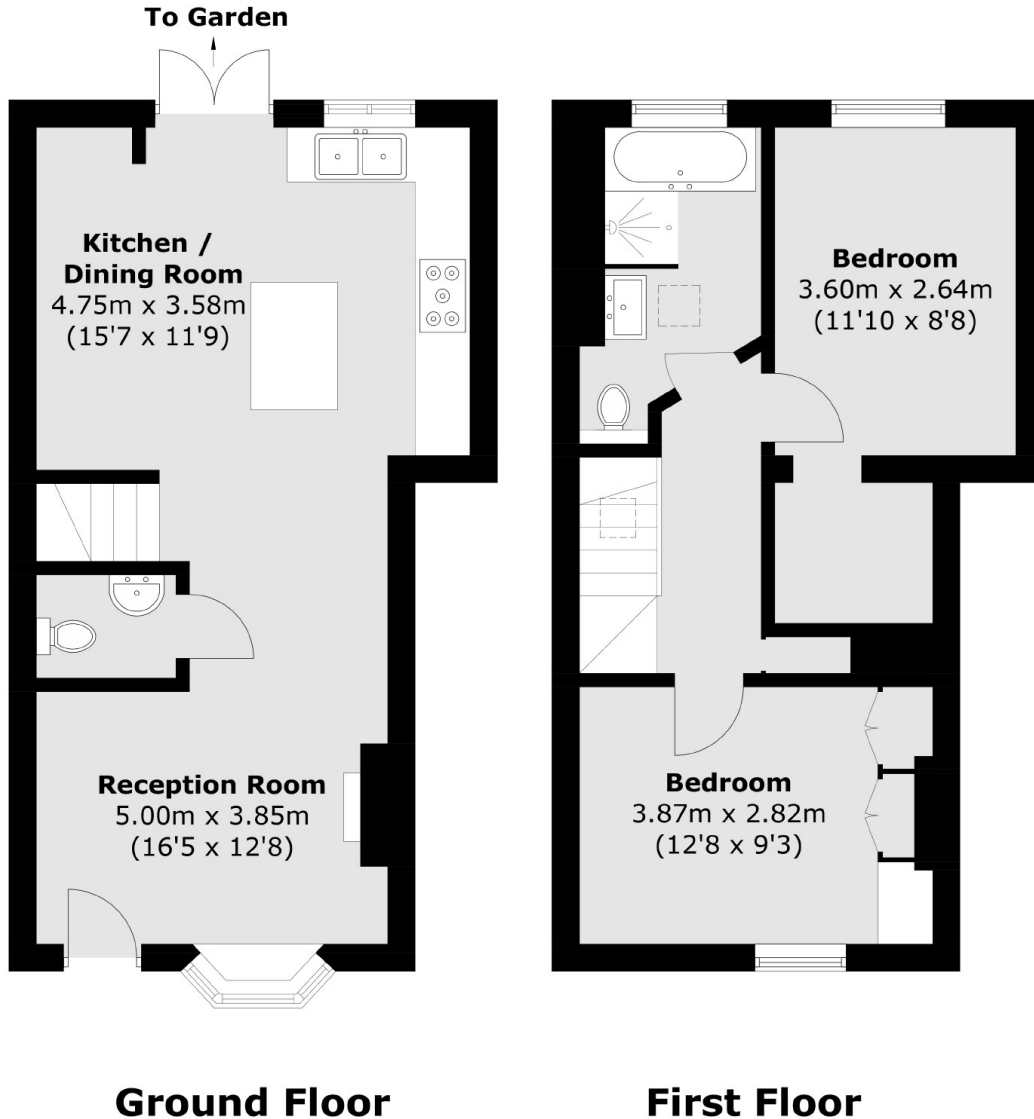
This charming two bedroom cottage has been beautifully redesigned, refurbished and extended by the current owner with no expense spared. There are two double bedrooms with walk-in wardrobe to the principle bedroom and large family bathroom, large open-plan kitchen/reception room on the ground floor and spacious garden.

St. Marys Square is ideally located for Ealing Broadway and South Ealing stations with Elizabeth, Central, District, Piccadilly and Nation Rail lines. There are numerous local eateries along with well regarded and sought after local schools.

### Features

- Two Double Bedrooms
- Walk-In Wardrobe
- Under Floor Heating
- Private Walled Garden
- Close To Transport
- No Onward Chain

St. Marys Square,  
London, W5



Total area (approx.): 75.9 sq. m (816.9 sq. ft)