



Delamere Road, W5

£571 Per week

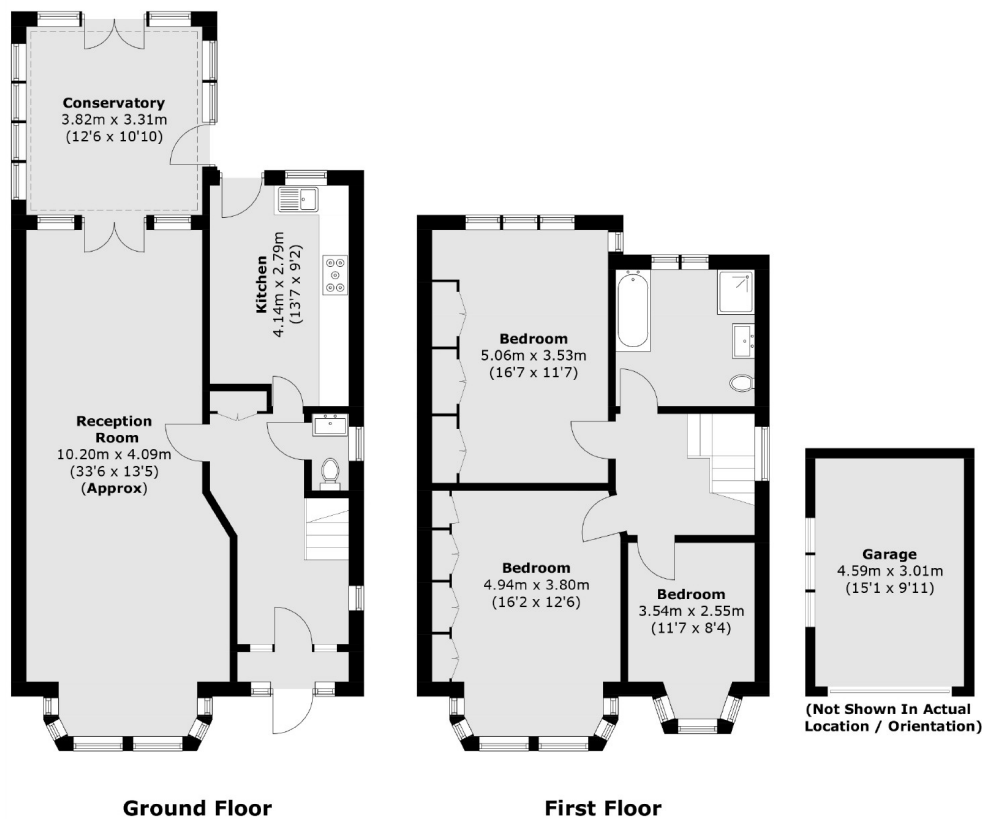
This three bedroom semi-detached house has been newly decorated throughout and offers off-street parking for two cars, a large conservatory with direct access to a blooming garden.

Delamere Road is a charming road less than a mile from Ealing Broadway station and just over half a mile from Ealing Common Underground station.

Features

Semi-Detached House
Three Bedrooms
Large Double Reception
Modern Kitchen
Off-Street Parking
Conservatory And Garden

Delamere Road, London, W5



Total area (approx.): 140.6 sq. m (1,513.3 sq. ft)
Garage area : 13.8 sq. m (148.5 sq. ft)

Contact

To arrange a viewing call our office on the number below or visit our website.



Energy Rating: D. We aim to make our particulars both accurate and reliable. However they are not guaranteed; nor do they form part of an offer or contract. If you require clarification on any points then please contact us, especially if you're traveling some distance to view. Please note that appliances and heating systems have not been tested and therefore no warranties can be given as to their good working order.