



The Park, W5

£461 Per week

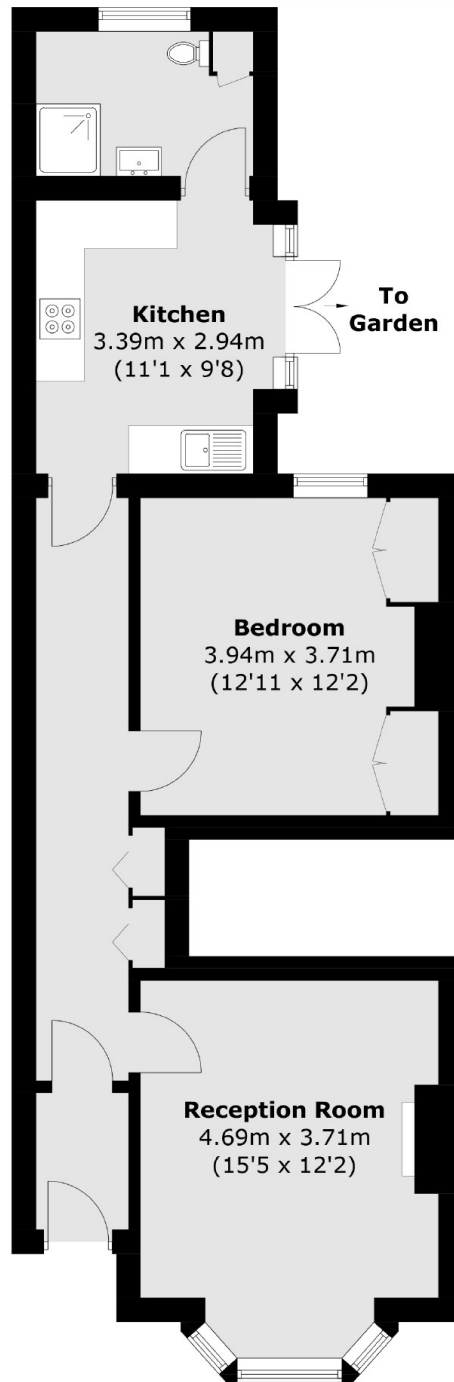
A large ground floor garden flat located on one of Ealing's most picturesque roads with high ceilings throughout, wooden floors and off street parking.

The Park is located equidistant between both Ealing Broadway and South Ealing for a wide range of transport options. For shopping, and dining, Ealing Broadway is a short walk away.

Features

- One Bedroom
- Large Reception Room
- Separate Eat In Kitchen
- Ample Storage
- Off Street Parking
- Private Garden

The Park, London, W5



Total area (approx.): 59.5 sq. m (640.4 sq. ft)