



Mountfield Road, W5

£2,000,000

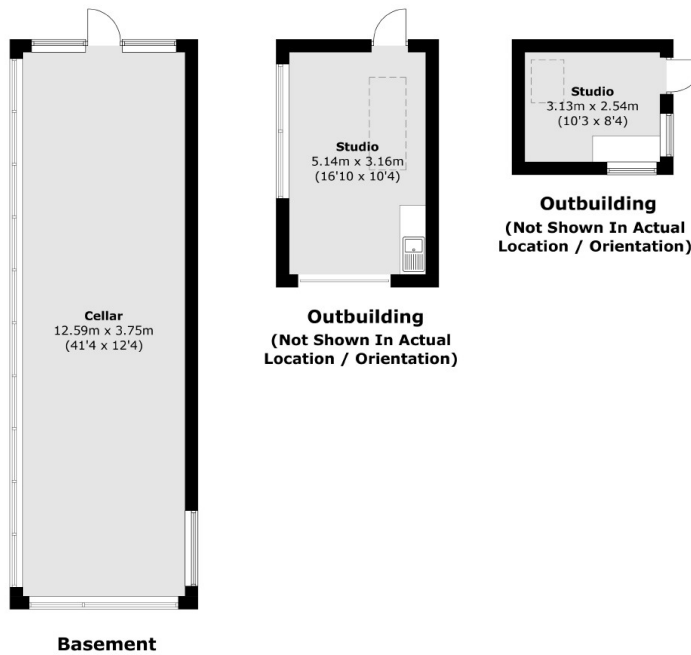
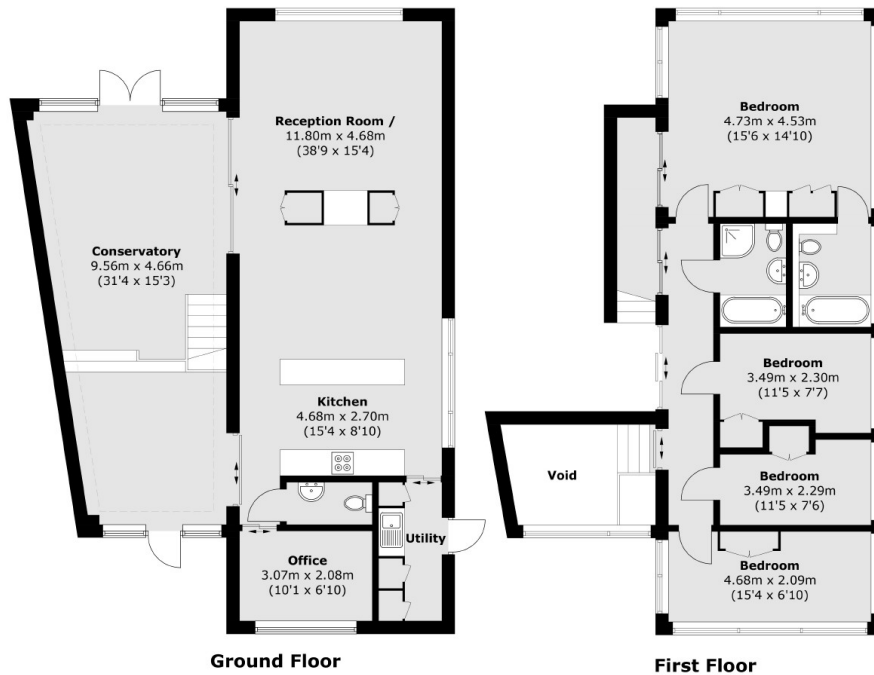
Introducing this award-winning three bedroom house, recipient of the prestigious RIBA Manser Medal for Best New House of the Year. The property features a unique layout with the main living area positioned on the north side, enclosed by a highly insulated, terracotta-clad wall with carefully placed windows. The south side boasts large glazed sliding doors that open into a stunning double-height courtyard. This courtyard serves as a striking entrance and connects to the staircase leading to the first floor, blending indoor and outdoor spaces seamlessly.

This property is 0.2 miles from Ealing Broadway where there are many Boutique shops, Bars, Restaurants, Super Stores and General Convenience Stores. Transport links include a multitude of Bus routes, and Ealing Broadway underground station (Elizabeth Line, Central Line, District Line, Mainline Rail). Close by are Primary and

Features

- Four Bedrooms
- Two Bathrooms
- Garage
- Off-Street Parking
- Central Location
- Close to Transport
- 3 Studio Spaces

Mountfield Road, London, W5



Total area (approx.): 225.4 sq. m (2,426.1 sq. ft)
Outbuilding : 24.5 sq. m (263.7 sq. ft)
(Excluding Eaves)