



Drayton Avenue, W13

£799,950

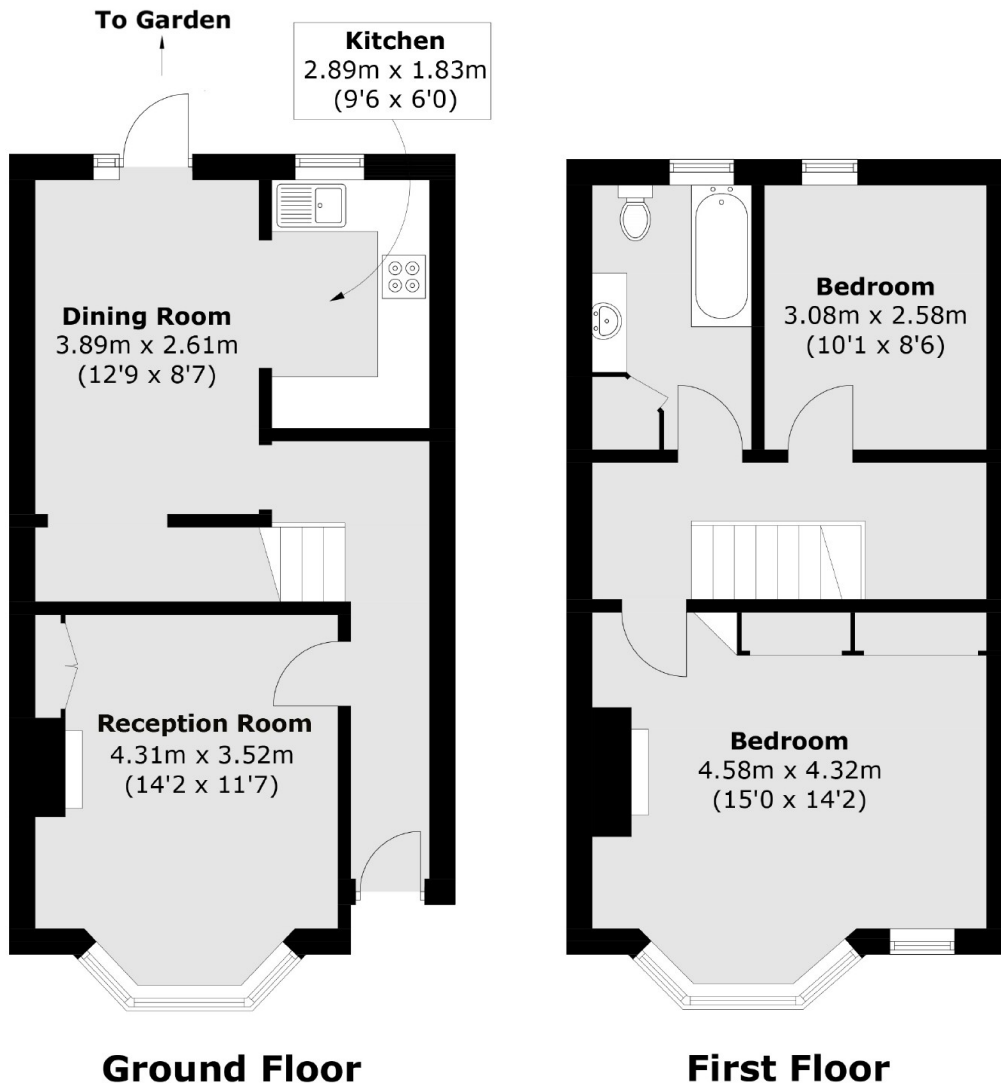
A fine example of a traditional red brick mid terrace Victorian house in the popular Draytons area. Currently arranged as a two bedroom, with an upstairs bathroom, many neighbouring properties have extended into the loft, and on the ground floor, to create four bedroom family home.

Locate just moments (0.1 miles) from West Ealing Elizabeth Line and National Rail station getting you into central London in approximately 13 minutes. There are great local schools and a family friendly park at the end of the street.

Features

- Two Bedrooms
- Two Reception Rooms
- Extension Potential
- Victorian Home
- South Facing Garden
- Close to Station

Drayton Avenue, London, W13



Total area (approx.): 81.5 sq. m (877.3 sq. ft)