



## The Avenue, W13

£325,000

Discover the perfect blend of convenience and comfort in this charming one-bedroom purpose-built flat, ideally situated near the bustling shops and vibrant amenities of West Ealing. Just a stone's throw from the Elizabeth Line station, this well-maintained property offers exceptional connectivity, making it a commuter's dream. The open-plan living and dining area provides a bright and welcoming space, leading out to a private balcony.

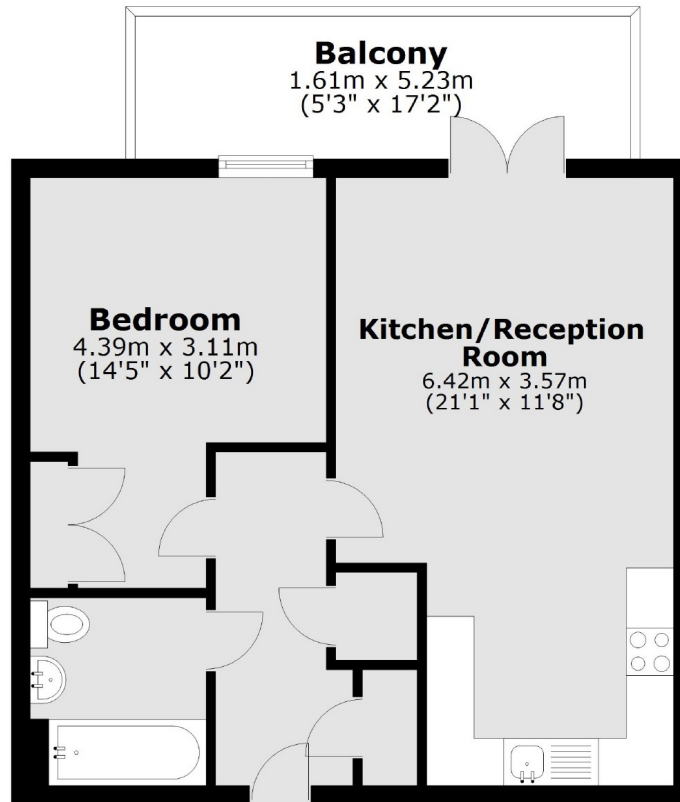
West Ealing and its Crossrail station are under 5 minutes walk away, with easy access to Broadway shops and restaurants.

### Features

- One Bedroom
- Chain Free
- Private Balcony
- Close to Elizabeth Line
- Lift Access
- Open-Plan Living

# The Avenue, London, W13

## First Floor



Main area: Approx. 43.6 sq. metres (469.5 sq. feet)  
Plus balconies, approx. 8.4 sq. metres (90.6 sq. feet)