

## Beechcroft Gardens, HA9

£1,250,000

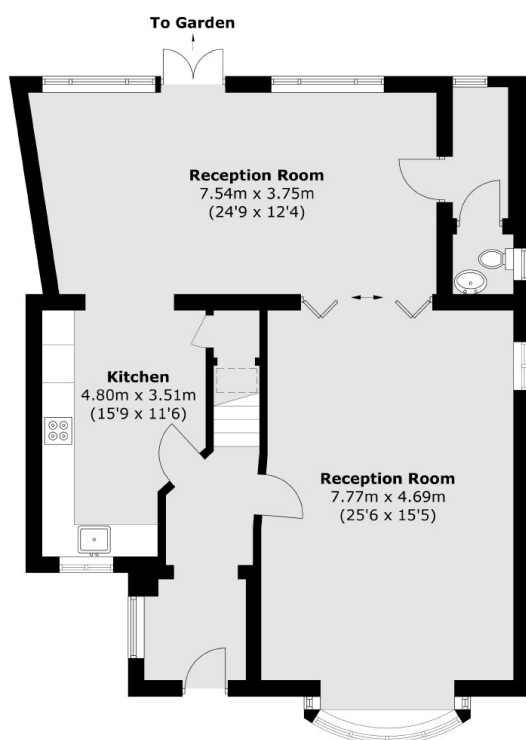
O.I.E.O £1,250,000. Perfect for a family home. This recently renovated semi detached house offers 1,975 sqft of living space. It has five bedrooms, two bathrooms, two wc's, two large receptions, large garden, off street parking for multiple cars and is being sold chain free.

This property is located moments away from Wembley stadium where there are many restaurants, bars and even a designer outlet. Transport links include Wembley Park, Wembley Stadium and many local bus routes.

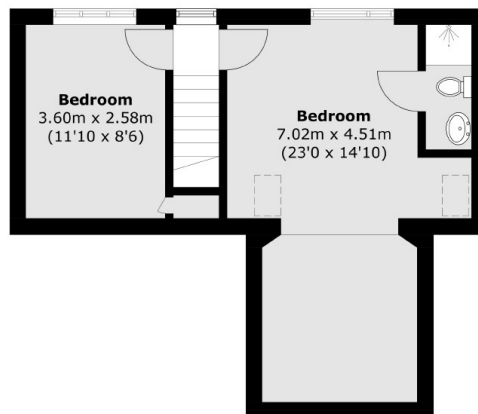
### Features

- Five Bedrooms
- Two Bathrooms
- Large Garden
- Off Street Parking
- Recently Renovated
- Close To Transport Links

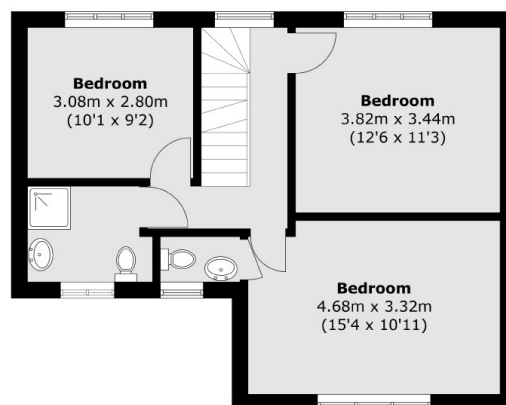
# Beechcroft Gardens, Wembley, HA9



**Ground Floor**



**Second Floor**



**First Floor**

Total area (approx.): 183.5 sq. m (1,975.2 sq. ft)